

Pheidole ryukyuensis n. sp.

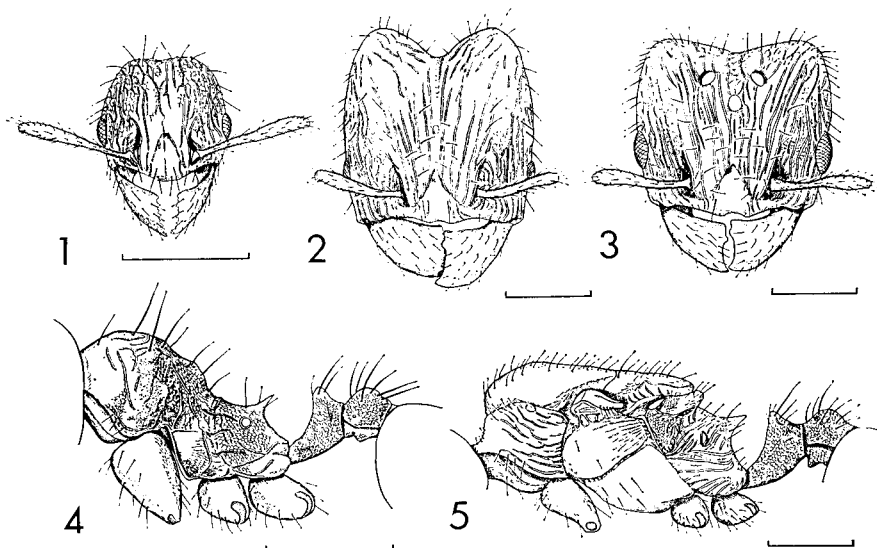
(Figs. 1-5)

Soldier: HW 1.22-1.26 mm, HL 1.30-1.35 mm, CI 92-94, SL 0.56-0.60 mm, WL 0.86-0.96 mm, TL 4.20-4.50 mm. (Five individuals were measured.)

Head, excluding mandibles, distinctly longer than broad; occipital lobes prominent and their posterior angles rather acute; median sulcus of head more or less distinct, reaching the middle of head, with feeble transverse impressions in full face view. Eye small, 0.14 mm in greatest diameter, with about 30 facets. Clypeus flat, with a low median notch at anterior border. Frontal area moderately concave, fused to clypeus. Antennal scape short, reaching just the middle of head; apical segment of antenna 2.3-2.4 \times as long as antennal segment X. Antennal scrobes short, diverging at the level of eyes in full face view. Gular dentition: with a midgular tubercle and paired mesal and lateral teeth.

Trunk less than half as broad as head. Pronotum raised but humeri rounded as seen from above. Mesonotum slightly convex. Propodeal spine stout, pointed, directed upward and backward. Petiole with crest blunt and horizontal as seen from behind. Postpetiole trapezoidal as seen from above, about 1.7 \times as broad as petiole. Legs short.

Head subopaque and costulate in full face view, but smooth and shining on sides. Mandible smooth and shining. Pronotum transversely rugulose; mesonotum and propodeum reticulate. Petiole and postpetiole finely reticulate. Gaster



Figs. 1-5. *Pheidole ryukyuensis* n. sp. — 1, Worker, head, full face view; 2, soldier, head, full face view; 3, female, head, full face view; 4, soldier, trunk, petiole and postpetiole, lateral view; 5, female, trunk, petiole and postpetiole, lateral view. Scale: 0.5 mm.