

of clypeus, front, occiput, posterior margin of prothorax, entire meso- and meta-nota, tegulae, and dorsal edge of the petiole; legs almost entirely brownish; abdomen brown.

MALE (fig. 4,B).

*Body length.*—7.5—9.5 mm.

*Mesonotal width.*—1.5—1.8 mm.

*Head.*—Antennal scape slightly longer than the first four funicular segments; dorsal half of head quadrate, anterior half about two thirds

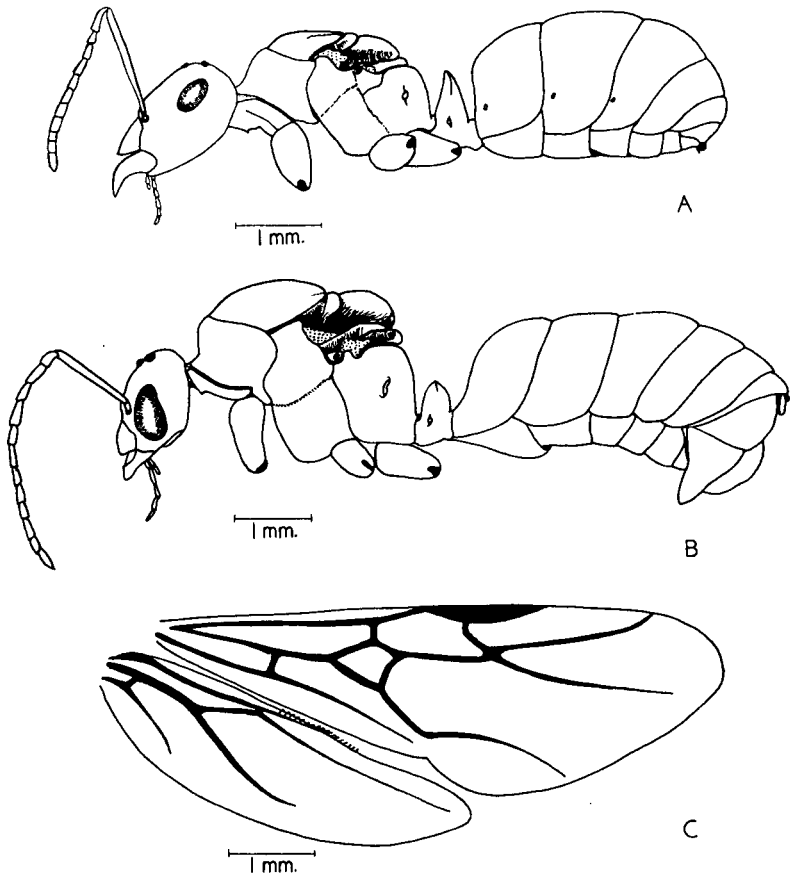


Fig. 4. — Outline drawings of *F. subnitens*.

A, female; B, male; C, male fore and hind wings.

as wide as posterior half and tapered anteriorly; decumbent to subdecumbent, long, greyish, coarse, and numerous erect hairs on the elevated occiput, occipital angles, gula, and anterior half of the clypeus; erect hairs of the bulbous compound eyes short, greyish, and numerous; mandible triangular, with a single apical tooth; integumental sculpture of the head strongly