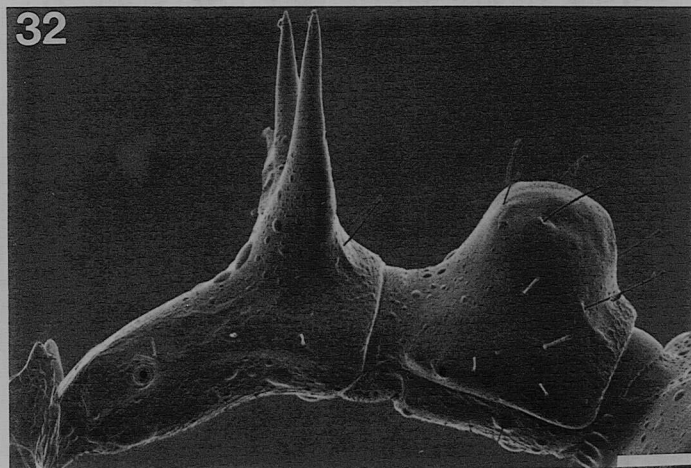
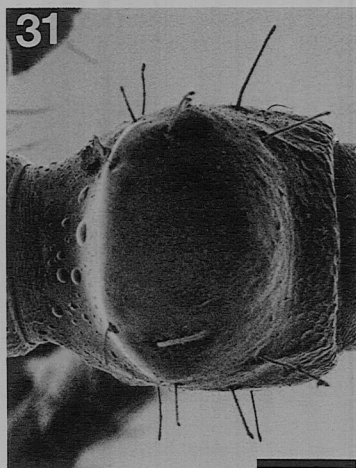
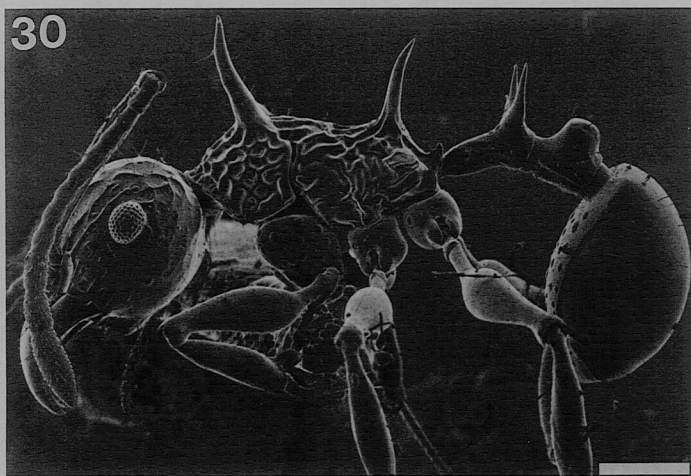
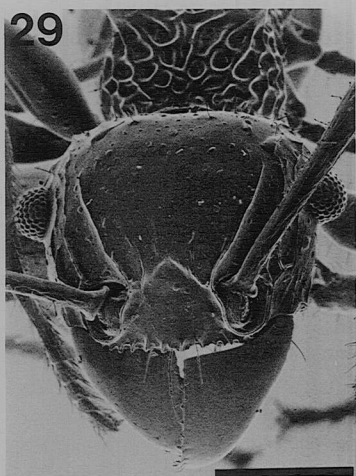


of majors with conspicuous rugae. Propodeal spines long, slender, directed upwards rather than strongly caudad, and lacking a conspicuously thickened base; node of petiole without two long lateral spines. From Sri Lanka.

*Minor.* The two minor worker syntypes measure HW 1.10 to 1.11, HL 0.95 (CI 116 to 117), ML 0.79 to 0.83 (MI 83 to 87), SL 1.10 to 1.11 (SI 100), EL 0.22 to 0.23, HFL 1.21 to 1.26 (FLI 128 to 132; FWI 24) mm. When viewed in full-face, head strongly concave across posterior

margin, and with moderately convex lateral margins. Maximum head width virtually the same above and below the level of the eyes. Head with rounded foveae having thick walls, except walls of foveae bordering on scrobes and on vertex are thinner, more like those of *A. ferox*; dorsally longest hairs extend about 0.18 mm. Clypeal index 111 and 113. Feeble lobe present on each side of medial clypeal hair; lateral clypeal hairs often in an enclosed fovea, although walls of fovea sometimes incomplete (as in Fig. 33). A well-devel-



Figures 29–32. *Acanthomyrmex laevis* holotype (minor worker). 29. Frontal view of head, at slightly oblique angle. 30. Lateral view of trunk. 31. Dorsal view of postpetiole. 32. Lateral view of waist.

Scale lines. Figures 29–30, 0.50 mm. Figures 31–32, 0.10 mm.