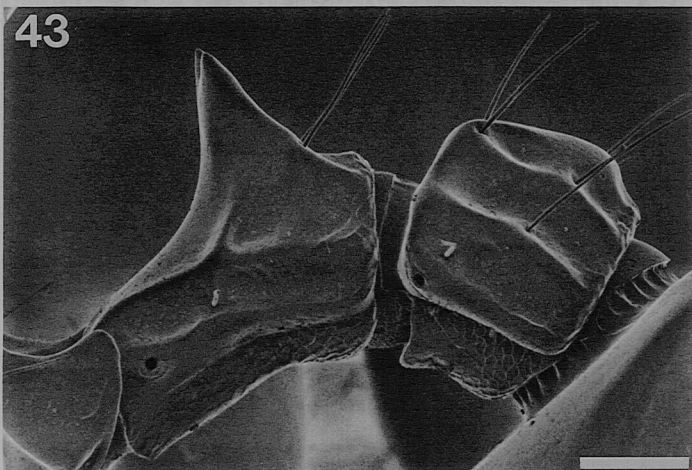
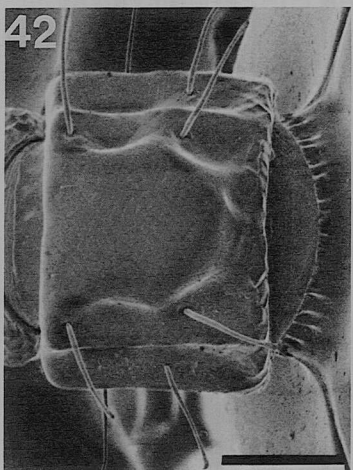
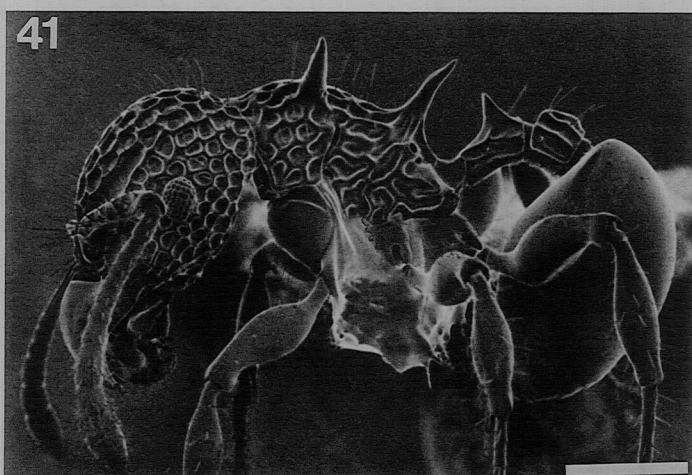
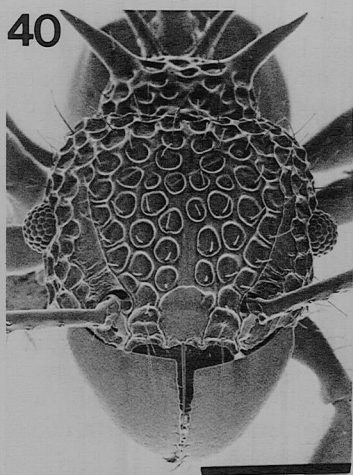


Diagnosis. Minors with head deeply concave dorsad and thus resembling *A. luci* and *basispinosus*, except: propodeal spines without a distinct thickened base, strongly directed caudad; mandibles each with a ventral tooth; medial clypeal lobes well-developed, projecting; postpetiole with only two pairs of hairs dorsally. Major worker unknown.

Minor. Holotype and single paratype measure HW 1.10, HL 0.90 (CI 122), ML 0.78 to 0.79 (MI 87 to 88), SL 0.90 (SI 82),

EL 0.16 to 0.17, HFL 1.00 to 1.03 (FLI 111 to 114; FWI 24) mm. Posterior margin of head deeply concave in dorsal full-face view; head shape similar to *A. luci*, but with lateral margins of head less strongly convex. Head widest above the eyes. Head with rounded foveae having thick walls; dorsally the longest hairs extend 0.10 to 0.12 mm. Scapes short (SI < 90). Clypeal index 140 to 144. Lobe to each side of medial clypeal hair strongly produced, but widely separated from the



Figures 40–43. *Acanthomyrmex careoscribis* holotype (minor worker). 40. Frontal view of head. 41. Lateral view of trunk. 42. Dorsal view of postpetiole. 43. Lateral view of waist.

Scale lines. Figures 40–41, 0.50 mm. Figures 42–43, 0.10 mm.