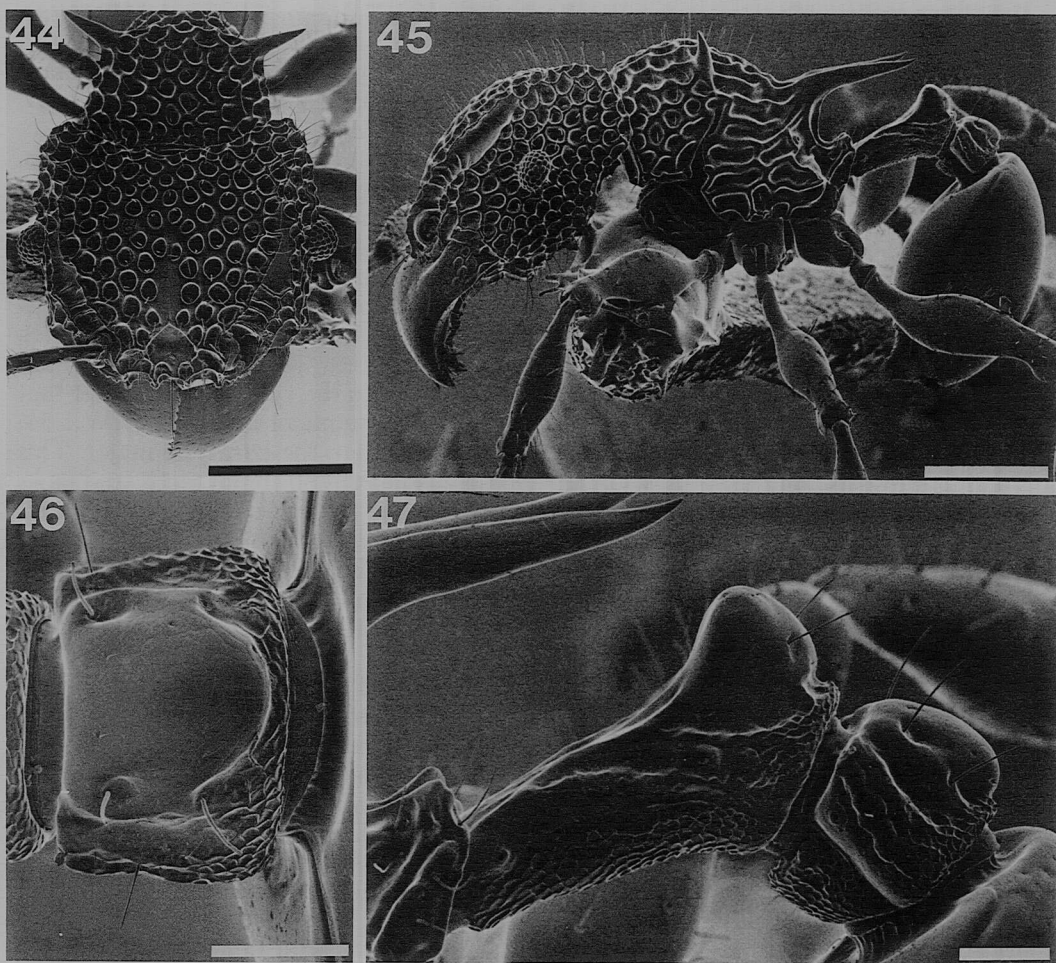


*Minor*. Holotype (HW 1.05 mm) and four minor paratypes measure HW 0.98 to 1.06, HL 0.84 to 0.91 (CI 114 to 117), ML 0.65 to 0.71 (MI 75 to 78), SL 0.83 to 0.88 (SI 81 to 84), EL 0.19 to 0.22, HFL 0.90 to 0.95 (FLI 104 to 107; FWI 21 to 22) mm. Head in full-face view appearing flattened or slightly concave across posterior margin. Head widest above the eyes. Head with oval foveae having thick walls; dorsally the longest hairs extend 0.08 to 0.10 mm. Scrobes bent sharply down-

wards posteriorly, forming a shallow groove for funiculus extending dorsad to each eye alongside groove for scape. Scapes relatively short (SI < 90), so that when retracted to scrobes, scapes barely extend beyond back margin of head. Mandibles often with relatively few denticles (usually eight or less; eight to 12 in most specimens in other species). Clypeal index 129 to 134. Lobe to each side of medial clypeal hair strongly produced, and more approximate to hair than in other



Figures 44–47. *Acanthomyrmex concavus* paratype (minor worker). 44. Frontal view of head. 45. Lateral view of trunk. 46. Dorsal view of postpetiole. 47. Lateral view of waist.

Scale lines. Figures 44–45, 0.50 mm. Figures 46–47, 0.10 mm.