

Shining throughout. Mandibles striate. Head, thorax, epinotum, and petiole reticulately carinulate, with the intermediate spaces foveolately punctate and rugulose. Postpetiole rugulose. Gaster and legs minutely punctate and more shining than the rest.

Erect, stiff, acuminate, yellowish hairs moderately abundant on head, body and appendages.

Color uniformly testaceous.

FEMALE (deälated).—Length 3.25 mm.

Head about as long as broad, broadest behind. Epinotal spines stout, triangular, shorter than their distance apart at base. Petiolar node shorter and deeper than in the worker, and more declivous in front. Postpetiole twice as broad as long.

Head, epinotum, petiole and postpetiole sculptured as in the worker. Mesonotum and scutellum with very fine longitudinal striæ and sparse, foveolate punctures.

Color darker than the worker, with the mesonotum and gaster and a spot at the ocelli, ferruginous, and the margins of the mesonotum and scutellum fuscous.

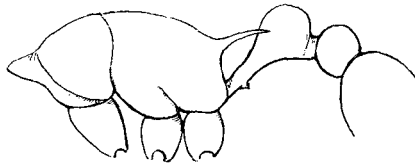


Fig. 3. *Macromischa (Macromischa) allardycei* Mann, ♀. Thorax and petiole from side.

Bahamas:—New Providence.

A small colony of this species, which is dedicated to Sir William Allardyce, Governor of the Bahamas, a naturalist himself and a friend of naturalists, was found in a hollow stem of *Cladium jamaicensis* on the borders of a swamp on the road between Grants Town and the Blue Hills.

The structure of the head and the petiole are very distinctive. The most curious thing about the species is the presence of some degree of polymorphism, one worker, the largest in the series, having the head proportionately broader than the others and the epinotal spines bent slightly upward. In general habitus *allardycei* resembles a large *Leptothorax*.

***Macromischa (Macromischa) schwarzi*, new species**

FEMALE (deälated).—Length 4.5 mm.

Head, excluding the mandibles, a little broader than long, considerably broader behind than in front, with rounded corners and nearly straight occipital borders. Mandibles with five small separated teeth. Clypeus convex basally and concave at anterior border. Eyes situated at middle of sides of head. Ocelli small. Antenna: stout, their scapes slightly surpassing occipital corners; first funicular joint nearly as long as the three following joints together; joints two to eight transverse; terminal