

longer than the declivity, from which it is separated by an obtuse angle; sides subgibbous, but without spines; declivous surface flat. Peduncle of petiole somewhat curved, bluntly toothed beneath in front, about as long as the node, which in profile is longer than high and very broadly rounded above and, from above, twice as long as broad, with slightly convex sides. Postpetiole as long as the petiolar node; from above, three times as broad behind as in front and about as long as broad. Femora incrassated, tibiae very slightly so.

Body and appendages shining, postpetiole and gaster with sparse punctures; mandibles, clypeus, cheeks and scapes striate. Thorax and epinotum coarsely rugose, the rugæ tortuous on pronotum and transverse on meso- and epinotum. Petiole rugulose at sides.

Body and appendages with sparse stiff hairs.

Color brilliant metallic green; thorax and epinotum darker than the rest.

FEMALE (deälated).—Length 5 mm.

Epinotum armed with a pair of blunt spines, the rest similar to the worker, with the usual sexual modifications and the following differences in sculpture. Pronotum transversely rugose. Mesonotum in front rugulose, but with a nearly smooth surface at middle; posterior third more coarsely rugose. Scutellum rugose at sides, more finely above and with a smooth disc at middle. Epinotum transversely rugose.

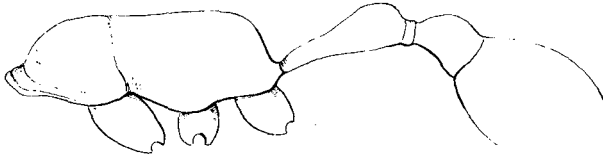


Fig. 6. *Macromischa (Crasomymex) wheeleri* Mann, ♀. Thorax and petiole from side.

Cuba:—Mina Carlota (Trinidad Mts.).

This beautiful species is related to *porphyritis* and *iris*, but is much smaller than either of these, differently colored, and has the head smooth and very shining.

Described from a series of workers and females taken from several colonies. One colony was nesting in a block of limestone. I attempted to turn the stone over to search beneath it, when it split in two, disclosing the whole colony of about thirty workers and one deälated female with many larvæ and pupæ gathered in a little pocket. The other colonies were found in hollow twigs lying on the ground.

***Macromischa (Antillæmymex) terricola*, new species**

WORKER.—Length 1.50–1.75 mm. (Fig. 7).

Head rectangular, longer than broad, as broad in front as behind, with feebly convex sides and nearly straight occipital border. Mandibles with five small teeth. Clypeus convex, rounded at anterior border. Eyes at sides of head in front of middle. Antennæ short, not quite attaining occipital corners; first funicular joint stout, as long as the two succeeding joints together; remaining joints, except those of the