

the space between posterior border of head and the truncated portion. Antennal scapes strongly curved and flattened basally, thickened apically, surpassing the occipital corners by a distance equal to their diameter at tips; first funicular joint a little longer than the second; remaining joints gradually decreasing in length; terminal joint twice as long as penultimate. Thorax robust. Pronotum more than twice as broad as long, arcuate, separated from pleuræ by an indistinct, rounded margin. Mesonotum a little broader than long. Epinotum evenly rounded above, the declivous portion flattened. Petiole in profile thin, wedge-shaped. Gaster thick, short. Legs short; femora compressed.

Subopaque. Head and legs somewhat more shining than the rest. Head, body and appendages finely and very densely punctate, impressed portions of head densely rugulose; vertex with scattered foveolate punctures. Mandibles sparsely and rugosely punctate and with fine striae.

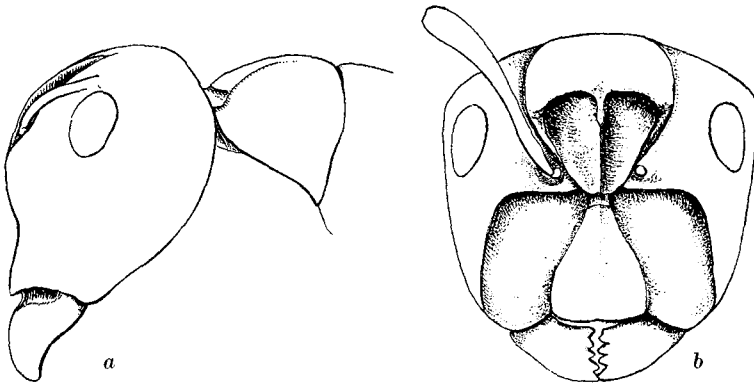


Fig. 10. *Camponotus (Colobopsis) sphaericus* Roger, ♀. a.—Head and pronotum from side. b.—Head from front.

Vertex, thorax, epinotum, and gaster with abundant white, glistening hairs, erect on vertex and thorax, but both erect and recumbent on gaster. Legs with finer recumbent hairs. Antennal scapes with a few erect hairs at tips.

Color black, antennæ and legs red, the anterior femora infuscated on flexor sides. WORKER MINOR.—Length 5.5 mm.

Head longer than broad, narrowest in front, sides nearly straight. Clypeus broader than long, indistinctly and bluntly elevated at middle, with straight anterior border. Frontal carinæ feeble and short, not extending to opposite middle of eye. Antennæ slender, their scapes surpassing occipital corners by about one-third their length.

Body and appendages somewhat shining. Sculpture similar to that of soldier, except that the head is not rugulose in front and the erect white hairs are much more abundant and not absent on the front of head.

Co'or as in worker, except the mandibles which are red instead of black.

Cuba:—Pinares Baracoa.