

Segment a little longer than the second or third. Legs long, the femora swollen and the tibiae enlarged apically.

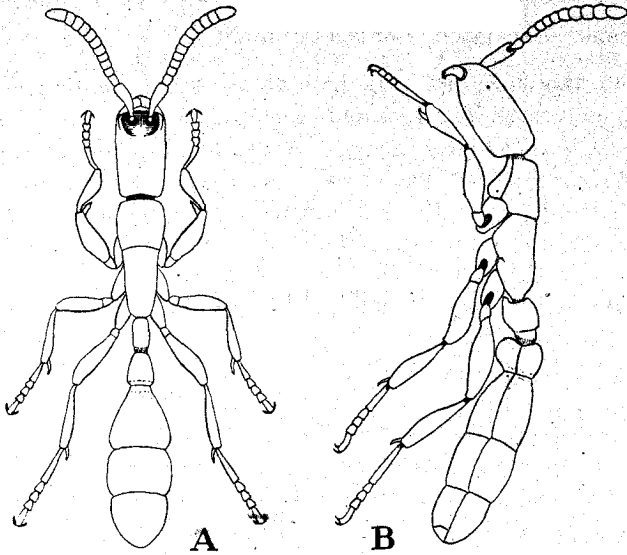


Fig. 1. Worker *Leptanilloides biconstricta* gen. nov. et sp. nov. A, dorsal, B, profile view.

Shining; head with abundant, separated, coarse, punctures; thorax and abdomen with much finer and sparser punctures. Head, body and appendages with abundant, rather coarse, short and erect, brownish hairs.

Color brownish red.

*Type-Locality*.—Tumupasa, Bolivia.

*Cotypes*.—Cat. No. 25905, U. S. N. M.

Described from a small series of workers, taken with callows, but without sexual or immature phases, from beneath a deeply embedded stone near a stream.

In general habitus this is very similar to *Leptanilla*, but the structure of the head associates it more closely with *Eciton*, from which it is distinct in the form of the frontal lamellæ, the form of the gaster and in not being polymorphic.