

head. Pronotal humeri with lamellate spines, postpetiole very large and broad. Clypeus, scrobes, posterior border of head, anterior border of thorax, sides of epinotum, upper and lower surfaces of petiole and lower surface of postpetiole with broad, thin, semitransparent lamellæ.

Genotype.—*Strumigenys* (*Tingimymex*) *mirabilis*, new species.

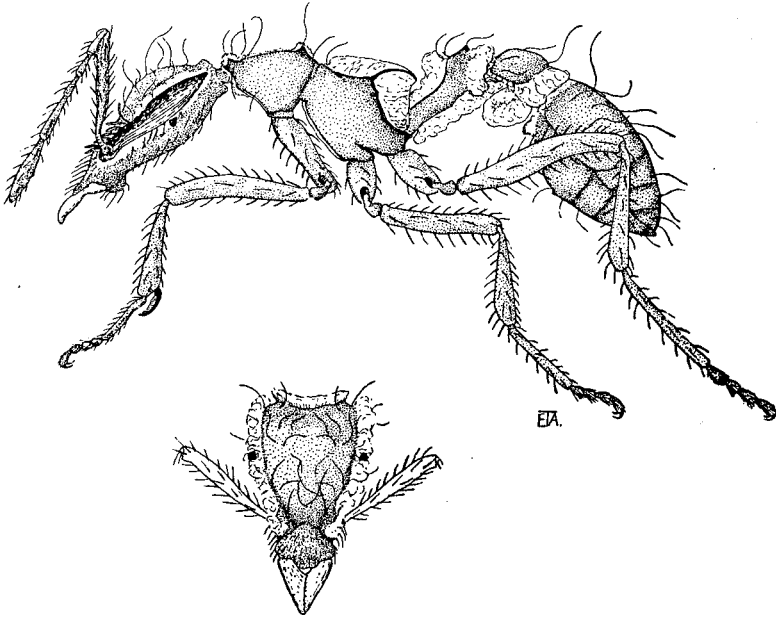


Fig. 1. *Strumigenys* (*Tingimymex*) *mirabilis*, new species, worker.

***Strumigenys* (*Tingimymex*) *mirabilis*, new species (Fig. 1).**

Worker.—Length 2.25 mm.

Head, excluding mandibles, nearly two times as long as broad and about twice as broad at occiput as in front, sides posterior to eyes nearly straight and parallel, in front of eyes convergent, then very feebly sinuate and slightly divergent to anterior border; occipital corners angulate, border shallowly emarginate; vertex rather strongly convex. Clypeus broadly convex, arcuate at anterior border. Mandibles a little more than