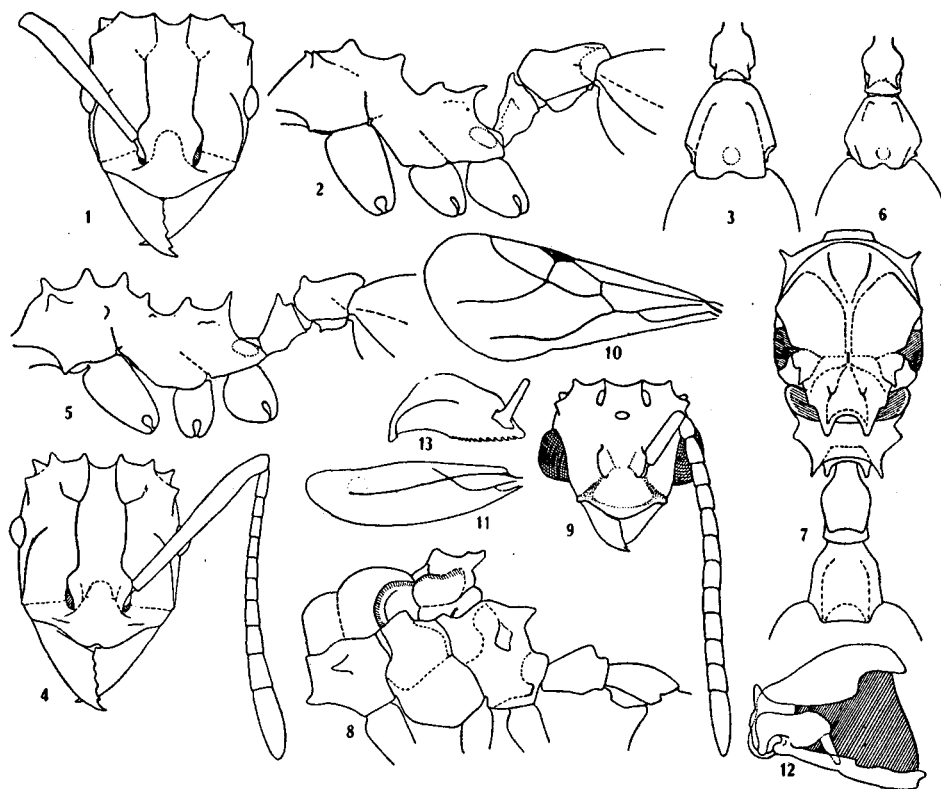


*Distribution* — From central and southeastern Brazil to northern Argentina.

*Specimens examined* — Brazil, Goiás State: Anápolis (W. W. Kempf) 1 worker (WWK); Rio de Janeiro State: Escola Nacional de Agronomia, km 47 (C. R. Gonçalves) 41 workers, 2 females, 12 males (DDSV, WWK), Três Poços



*Mycetarotes parallelus* (Emery), worker — Fig. 1: Head; fig. 2: thorax in profile; fig. 3: pedicel in dorsal view — *Mycetarotes senticosus* sp. n., worker — Fig. 4: Head; fig. 5: thorax in profile; fig. 6: pedicel in dorsal view, — *Mycetarotes parallelus* (Emery), male — Fig. 7: Thorax and pedicel in dorsal view; fig. 8: thorax and pedicel in profile; fig. 9: head; fig. 10: fore wing; fig. 11: hind wing; fig. 12: paramere and volsella seen from the inside; fig. 13: penis valve in profile. Kempf del.

(T. Borgmeier) 1 worker (CTB); São Paulo State: Agudos (W. W. Kempf, R. Mueller) 4 workers (WWK), Guaratinguetá (W. W. Kempf) 1 worker (WWK), São Paulo (H. Luederwaldt) 5 workers (nidotypes of *M. luederwaldti* Forel) (DZSP, CTB), São Paulo, Instituto de Botânica (W. W. Kempf) 4 workers, 1 female (WWK). Argentina: Tucumán (N. Kusnezov) 4 workers (CTB).

*Synonymy* — As BORGMEIER (in litt.) already surmised, *M. luederwaldti* (Forel) is nothing but a synonym of *parallelus* (Emery). The nidotypes of the former fully agree with the description and figures of the latter as given by EMERY (1905).