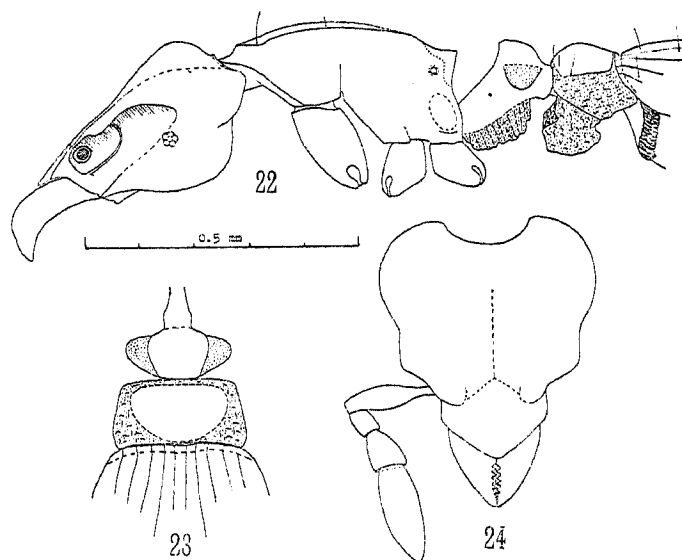


Clypeus flat, smooth and shining, covered with minute, sparse, setigerous punctures; anterior apron triangular, tapering to a bluntly rounded apex; posterior border well-defined. Frontal carinae broadly expanded laterad, roofing completely the cheeks and the antennal scrobe. Lateral borders of cephalic dorsum bluntly marginate, diverging obliquely laterad in front, then forming a blunt and projecting angle and running subparallel



*Gymnomyrmex minusculus* n. sp., worker. Fig. 22. Body in profile. — Fig. 23. Pedicel in dorsal view. — Fig. 24. Head.

for a short distance, then diverging again caudad and merging with the prominent and broadly rounded occipital lobes. Occiput deeply excised in the middle. Frontal suture vestigial, reaching back to the level of the greatest lateral expansion of head. Front and vertex flat, rather smooth and shining, curving conspicuously downward at posterior third of head length toward occiput and occipital lobes which are at a much lower level. Lateral portions of cephalic dorsum and occipital lobes feebly and superficially reticulate-punctate. Sides and gular face of head likewise finely and superficially reticulate-punctate, not quite shining. Eyes small, with about 6 facets, its maximum diameter less than 0.03 mm; situated at about the middle of the sides of head. Inferior border of cheeks immarginate. Antennal scape clavate, attenuate at base and incrassate at apex, subopaque, rather densely reticulate-punctate. Funiculus three-segmented, segment III longer than I and II combined.