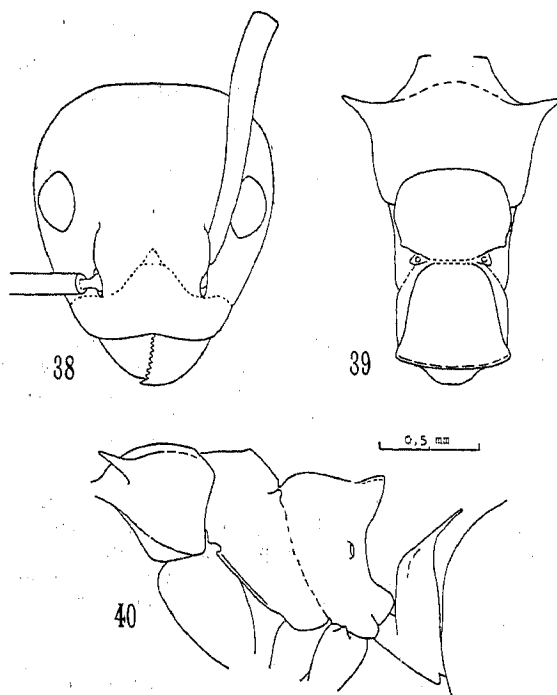


Subfamily Dolichoderinae Forel

**Monacis andina** n. sp.

(Figs. 38-40)

Worker (holotype). — Total length 5.4 mm; head length 1.28 mm; head width 1.23 mm; scape length 1.25 mm; Weber's length of thorax 1.73 mm; width of pronotum between tips of spines 1.15 mm; mesonotum width 0.59 mm; epinotum width



*Monacis andina* n. sp., worker, holotype. — Fig. 38. Head. — Fig. 39. Thorax in dorsal view. — Fig. 40. Thorax and pedicel in profile. (Kemp f del.)

0.61 mm. Black; chewing border of mandibles fuscous brown. Mandibles very finely and superficially reticulate, somewhat shining. Dorsum and sides of head subopaque, coarsely reticulate-rugose, the meshes enclosing deeply impressed, often elongate pits, the bottom of which is finely reticulate-punctate. Scapes coriaceous, subopaque. Dorsum of thorax, excluding neck, coarsely reticulate-rugose and foveolate. Sides of thorax with similar sculpture, except for nearly smooth, superficially reticulate areas dorso-posteriorly on latero-tergite of pronotum and inferior half of mesothoracic catapisternum: sides of epinotum