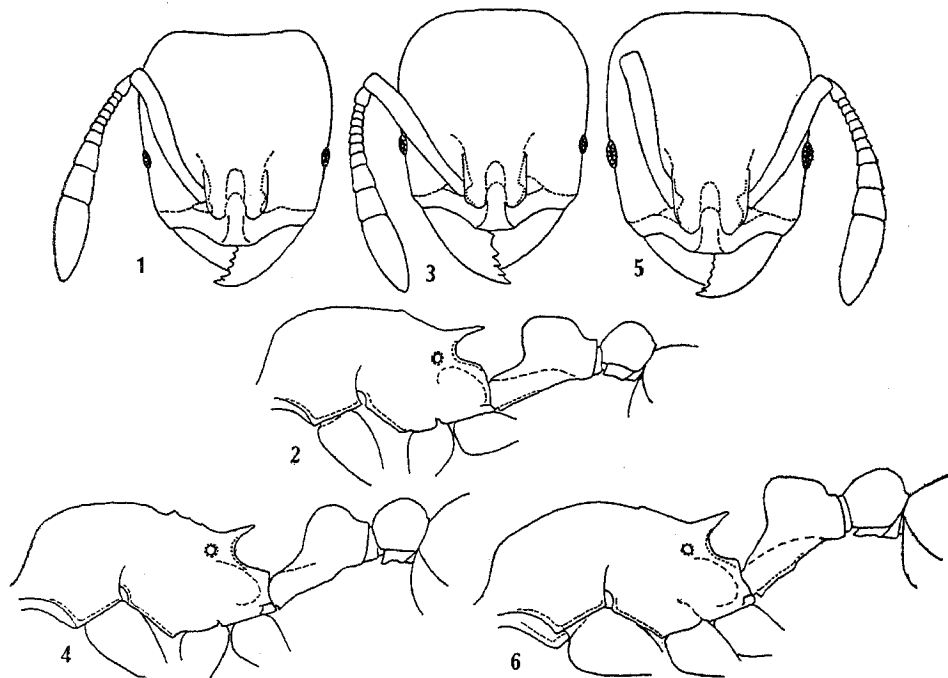


*Rogeria pellecta* sp. n.

(Figs. 3-4)

*Worker (holotype)* — Total length 3,6 mm; head length 0,85 mm; head width 0,75 mm; maximum width between outer edges of frontal carinae 0,27 mm; scape length 0,56 mm; eye length 0,08 mm; thorax length 0,96 mm; thorax width across pronotum 0,51 mm; petiole length 0,43 mm; width of petiolar node 0,21 mm; postpetiole length 0,23 mm; postpetiole width 0,27 mm. Ferruginous; gaster dark brown.



*Rogeria minensis* Santschi, lectotype worker — Fig. 1: Head; fig. 2: thorax and pedicel. *Rogeria pellecta* sp. n., holotype worker — Fig. 3: Head; fig. 4: thorax and pedicel. *Rogeria lacertosa* sp. n., holotype worker — Fig. 5: Head; fig. 6: thorax and pedicel. Kempf del.

Head as shown in Fig. 3; note the scarcely convex sides, the broadly rounded occipital corners, the straight to slightly convex occipital border. Mandibles smooth and shining; chewing border with 6 acute teeth, gradually diminishing in size toward apex (actually in the holotype the subbasal tooth is worn off and the basal tooth is subrectangular). Median lobe of clypeus elevated, smooth and shining, anteriorly subtruncate and subperpendicular, lateral borders carinulate; posterior portion, including impressed frontal area, deeply wedged in between frontal carinae. Lateral portions of clypeus (above mandibular insertion) with longitudinal costae which continue on cheeks. Frontal carinae broadly expanded, completely roofing antennal socket. An-