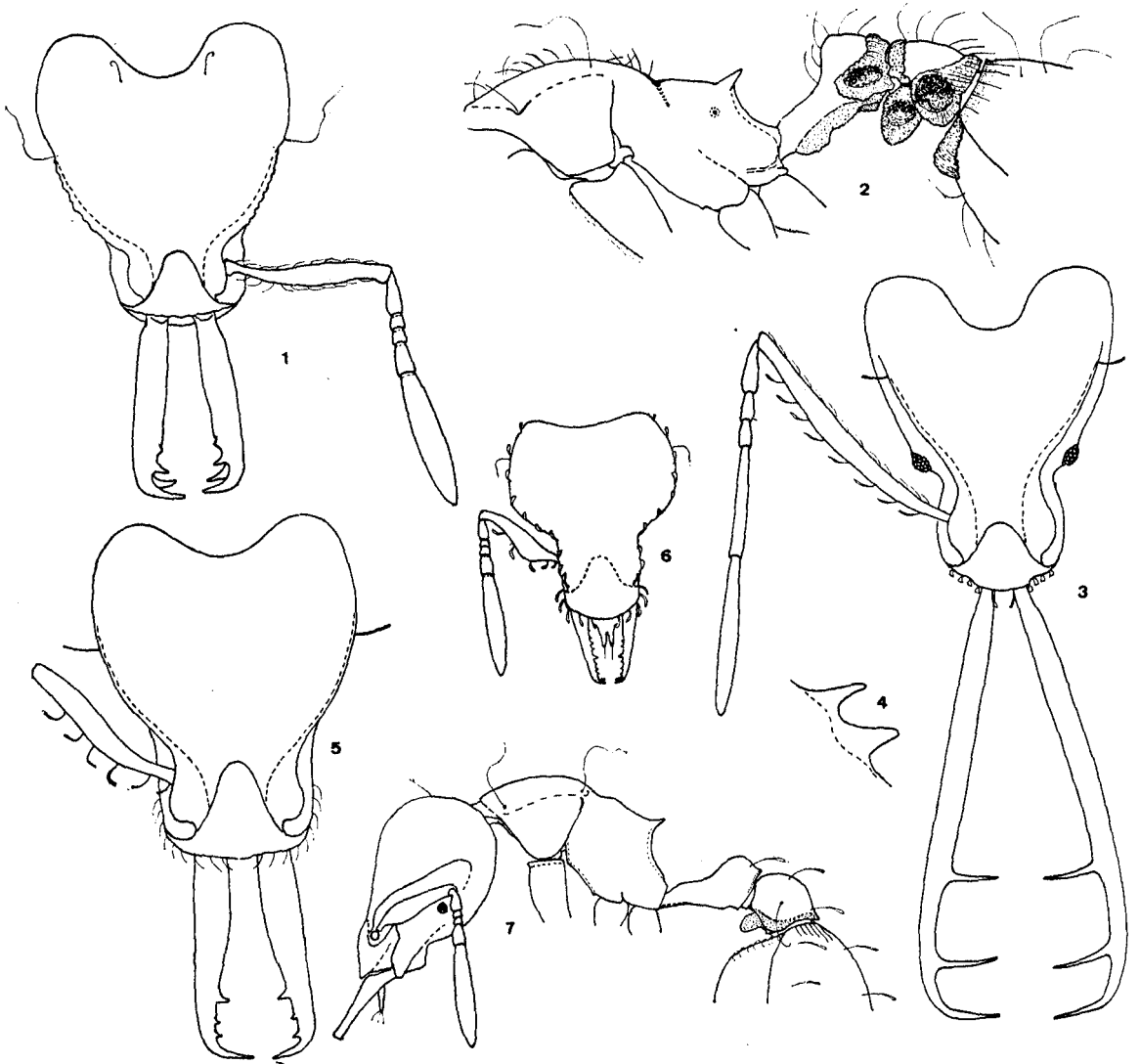


in front of the very small eyes which measure 0.04 mm across their greatest diameter and do not have more than 15 ommatidia. Antennal scapes attenuate at base and slightly constricted in front of apex. Funicular segments I-V having the following proportional lengths: 7 - 2 - 2 - 5 - 20.

Thorax as shown in Fig. 2. Anterior border of pronotum strongly convex and marginate by a low carinule; shoulders

marked and dentate, sides submarginate. Mesonotum laterally immarginate. In profile, the pronotum and the mesonotum form a continuous gently convex curvature. Metanotal groove deeply impressed, although not apparent as such in lateral view on account of the longitudinal, raised costae that traverse it. Basal face of propodeum slightly broader than long, the lateral borders submarginate, the propodeal spines (one on each side) about half as



*Strumigenys cosmostela* sp. n. — Fig. 1: worker, head; fig. 2: worker, thorax and pedicel, *Strumigenys* ? *dolichognatha* Weber — Fig. 3: worker from Igarapé Merianil, head; fig. 4: propodeal armature in sideview. *Strumigenys gemella* sp. n. — Fig. 5: worker, head. *Neostruma metopia* Brown — Fig. 6: worker, head; fig. 7: worker, sideview (legs and apical half of gaster omitted).