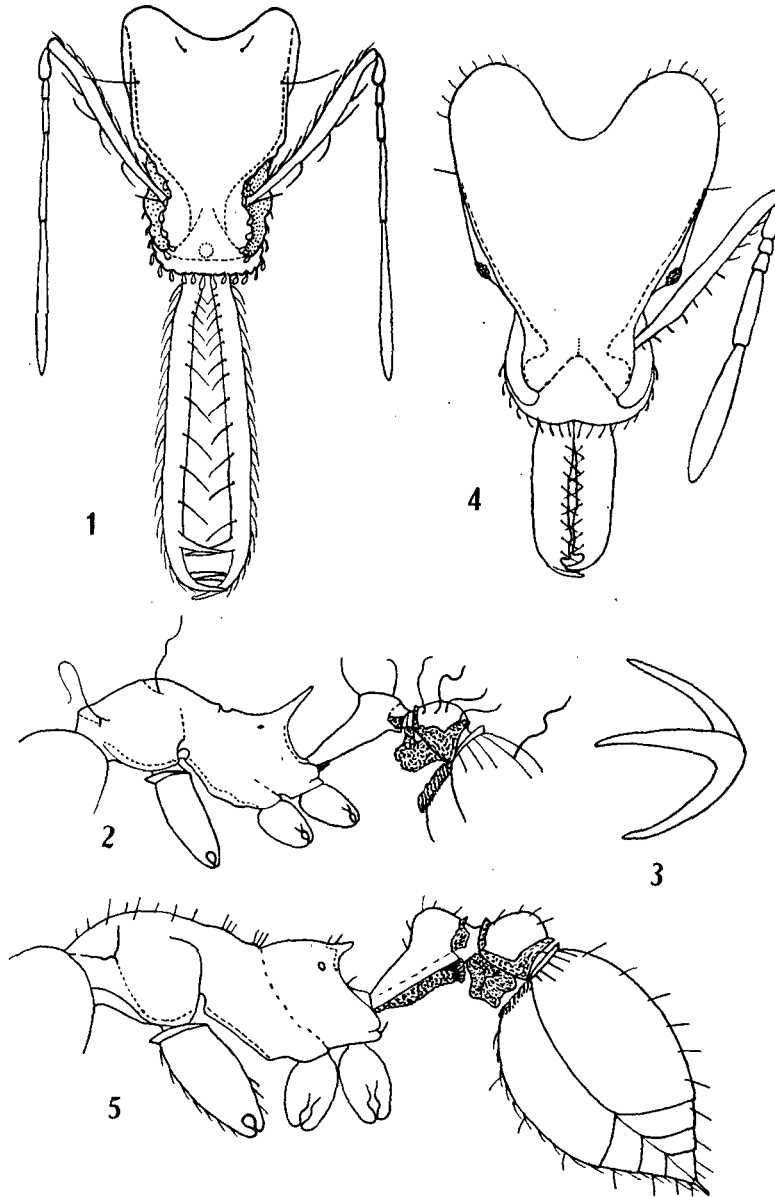


practically straight, so that the inner and outer borders of the shaft are parallel or very nearly so from the basal constriction to the preapical fork. Armature of each mandible consisting of an apical fork of two very long, slender, spiniform



*Strumigenys trudifera* sp. n., worker — Fig. 1: Head in full-face view; fig. 2: thorax and pedicel in side view; fig. 3: apical fork of mandibles seen in frontal aspect. *Strumigenys princeps* sp. n., worker — Fig. 4: Head in full-face view; fig. 5: thorax and pedicel in side view. (Kempf del.)

teeth, subequal in length, bent inwardly and approximately at right angle; no intercalary teeth or denticles; and a single, straight, acute, preapical tooth, as long as the dorsal apical tooth, seen from the front (Fig. 3) turning first