

In the three species figured in Smith's paper the large basal tooth is probably present but concealed under the clypeus.

(3) The eyes are not visible from the anterior view of the head. But as shown below for *dietrichi*, this may not be a reliable character.

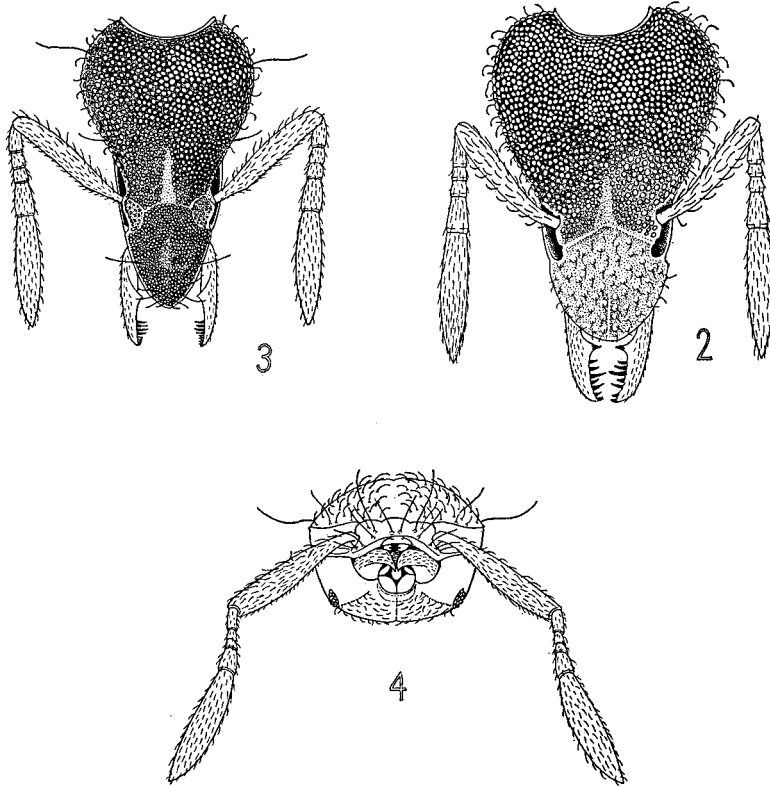


FIG. 2. *Strumigenys ohioensis*, sp. nov., frontal view of head showing the short hairs of uniform length on the clypeus which distinguish this species from *Str. clypeata* Rogers and its varieties which have either spatulate hairs or much longer hairs.

FIGS. 3 and 4. *Strumigenys dietrichi* Smith. 3, Frontal view of head. 4, Face, showing the vibrissae-like clypeal hairs.

*Locality:* Tupper's Plains, Meigs County, Ohio, M. M. Schramm, collector.

Described from two workers found in partially decayed oak rail embedded in the ground of a dense wooded area bordering a ravine.

Type and cotype to be deposited in the collection of the Museum of Comparative Zoology, Cambridge, Mass.