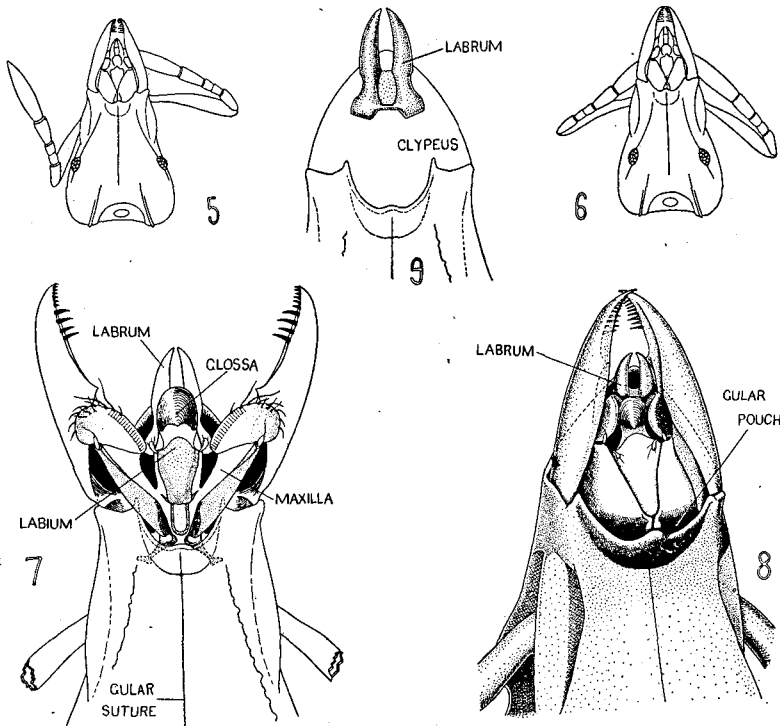


from logs. It has recently been collected by Thomas Park from logs in a woods at Urbana, Illinois. On September 18, 1932, Kennedy found the nest, mentioned previously, in a white oak log on the grounds of the Montvale Springs Hotel, east of Maryville, Tennessee. This hotel is in the western foothills of the Chilhowee Mountains, which is the range just west of the Great Smoky Mountains. It was a large nest $1\frac{1}{2} \times 1 \times \frac{1}{2}$ inches in size and contained over 80 workers.



FIGS. 5-9. *Strumigenys dietrichi* Smith. 5, Cotype, ventral surface of head, showing the eyes protruding beyond the lateral contour. 6, Tennessee specimen, a minor worker, narrow between the eyes. 7, Ventral view of mouth-parts expanded by KOH. 8, Ventral view of mouth-parts closed. 9, Ventral view of forked labrum attached to underside of clypeus.

The queen was not found and there was little brood. The nest was an ovoid chamber and appeared to connect by minute galleries through the red punky wood to two or three very much smaller chambers four to six inches distant where a few of the total number of workers were taken.