

Table 1 (continued)

Behavioural act	Frequency of behavioural acts	
	Colony 1 (<i>N</i> = 1692)	Colony 2 (<i>N</i> = 2310)
Feeding		
Feeding on honey in the nest		0.0009
Licking the plaster	0.0035	0.0031
Carrying prey inside nest		0.0026
Chewing prey inside nest	0.0041	0.0069
<i>subtotal</i>	<i>0.0076</i>	<i>0.0135</i>
TOTAL	1	1

(notably by Taylor, *pers. com.*). Trophic egg production or the exchange of ingluvial food within nests have likewise never been observed in this species (Taylor, *pers. com.*). Feeding by *Nothomyrmecia* queens has not otherwise been observed. These and other observations imply (1) that queens in *Nothomyrmecia* are not fed directly by workers, that (2) the workers do not exchange food among themselves, and that (3) larvae are nourished entirely by feeding directly on worker-foraged preys.

Very few observed behavioural acts were directed by workers towards the queen, and their frequency was almost the same in both colonies (0.18 and 0.17% respectively). They included only palpation and licking. Overall, *Immobility inside nest* was the behavioural act most frequently observed, followed by *Self-grooming* and *Guarding* of the nest entrance.

Differences between the colonies were evident in two regards:

- 1) Foraging and feeding. Although foraging individuals were somewhat infrequently observed, the frequency of feeding acts recorded for colony 2 was twice that of

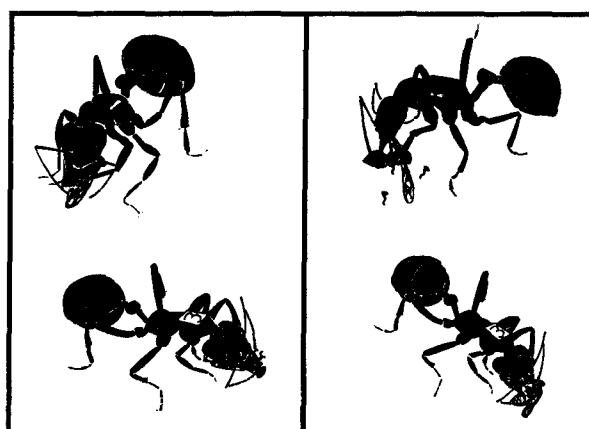


Figure 1. A *Nothomyrmecia* queen (up) is masticating a captured *Drosophila* while a nearby worker facing another direction does the same (drawings taken from two photographs separated by a seven-minutes delay)