

guished by its smaller size, by the colour of the head and of other parts of the body, and by other characters; and from all of them by erect hairs being deficient on the tibiae and scapes.

Dr. FÖREL, who kindly sent us a specimen of the European *Cr. Auberti* for comparison, considers the Japanese form a variety of that species.

Described from several ♀ collected at Obata in the Island of Honshū by Mr. YASUSHI NAWA, a well-known Japanese entomologist, with whom we have much pleasure in associating the name of this new variety.

Subfamily CAMPONOTINÆ FÖREL.

***Prenolepis* (Nylanderia) *Sakurae* sp. nov.**

♀ 1-1.7 mill. long.

Mandibles $1/2$ as long as the head, the upper part incurved, the masticatory margin broad, with 5 unequal, viz. 3 large and 2 minute, teeth. Head, excluding the mandibles, longer than broad, sides slightly convex; posterior angles rounded, posterior border nearly straight, the front prominent, and the vertex rounded. Eyes moderately large. Clypeus transverse, convex, arched, not carinate, its anterior border rounded but not excised. Frontal area broader than long, distinct from the clypeus. Frontal carinae high. Antennal foveae distinct. Antennae slender; the scapes exceeding about $1/4$ of their length beyond the posterior corners of the head, thicker towards the apex, slightly curved; the first funicular joint longer than broad; joints 2-6 broader than long; joints 7-8 nearly as long

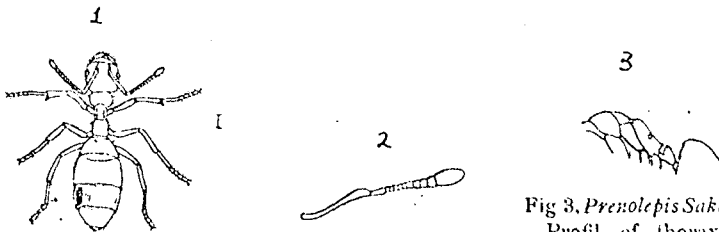


Fig. 1. *Prenolepis Sakurae* ♀. Fig. 2. Antenna of same.

Fig. 3. *Prenolepis Sakurae* ♀.
Profil of thorax and
petiole.

as broad, joints 9-10 a little longer than broad, the terminal joint as long as joints 8-10 together and forming a club. Thorax distinctly longer than the head, in front about $2/3$ as broad as the latter, both pronotum and mesonotum being high: pronotum broader than long, the upper surface convex, rounded on the sides; mesonotum as long as broad, the upper surface slightly convex; pro mesonotal