

The premental shield is moderately sclerotized, and the epimental sclerites are generally well defined. In the male examined, there is a membranous expansion that might be called a raquette (fig. 198), but it does not seem to be an expansion of the distal end of the epimental sclerite. The subglossal brushes are prominent and are composed of large setae enlarged apically (figs. 197, 198). In the male, the ends of these setae may be truncated. Paraglossae and/or paraglossal pegs are absent.

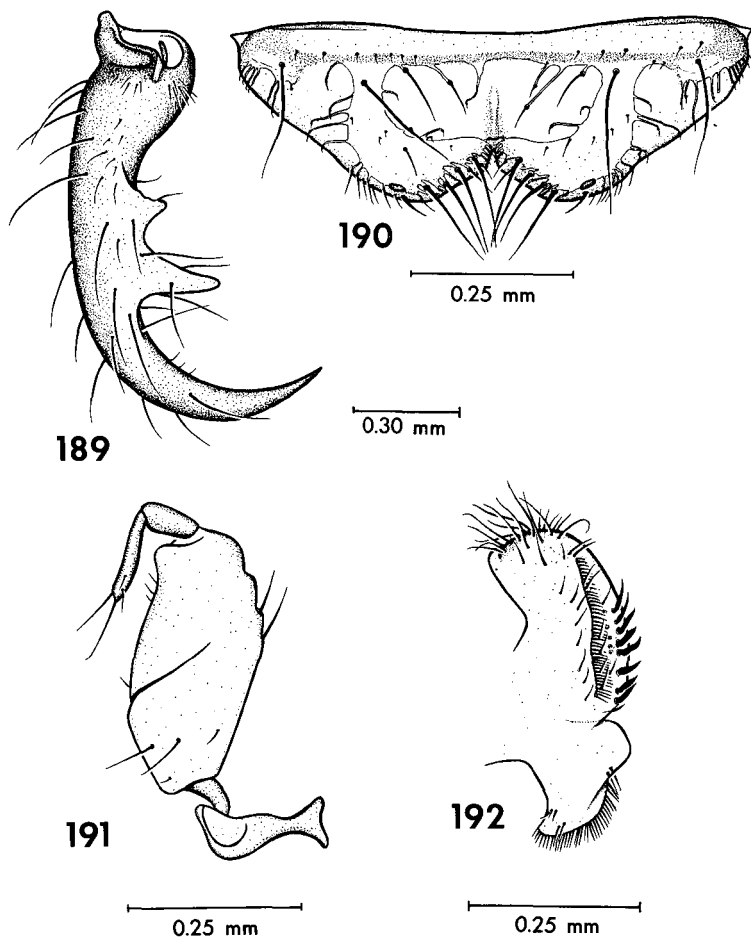


Plate 48. *Cheliomyrmex morosus* (soldier).

Fig. 189. Right mandible, dorsal view.

Fig. 190. Labrum, external view.

Fig. 191. Left stipes, maxillary palpus and cardo, external view.

Fig. 192. Left galea and lacinia, external view.