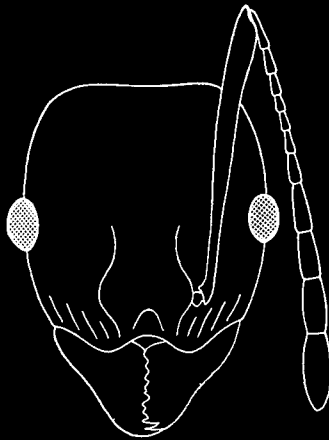
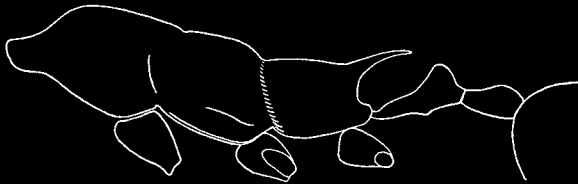


ance. Fine, longitudinal rugulae present on the genæ between the antennal insertions and the eyes, but easily discernible only under a magnification of 60 diameters. Frontal area subopaque, with one or two rugulae. Dorsum and pleuræ of thorax coarsely punctate; opaque except the extreme anterior margin of the prothorax. Petiole and postpetiole more finely punctured, sub-



A



B

Fig. 1. *Pheidole* (*Ceratopheidole*) *clydei*; a. head, dorsal view, b. profile of thorax.

opaque to somewhat shining on the node. Gaster shagreened, but shining.

Hairs erect, fine, yellowish white, and scattered on all parts of the body except the scapes and funiculi. Pubescence inconspicuous or absent on most portions of the body, but abundant on the antennæ.