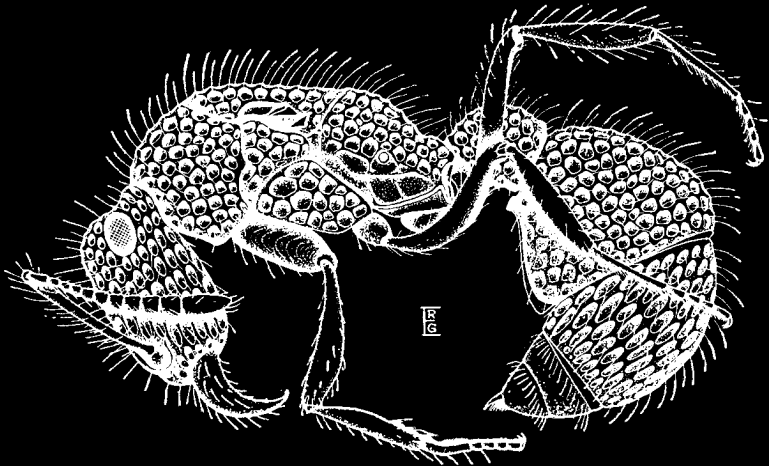


spite the heavy sculpturing of the body. Epinotum with broadly rounded basal face passing abruptly into a deeply concave declivity which partially accommodates the node-like petiole. The declivity is bounded laterally by high, sharp, narrow ridges, each ridge having a very small, blunt epinotal spine, that almost blends with the general sculpture. Petiole subglobose or nodiform, narrower in front, expanding gradually behind, but sharply constricted where it joins the postpetiole or first gastric segment; convex dorsally and concave ventrally, provided with a long, flat, anteriorly



Text-fig. 1. *Stictoponera posteropsis*, profile.

projecting, ventral tooth. Postpetiole broad, globose, its ventral surface armed with a long, narrow keel which expands into an open, lip-like structure at the anterior margin and directly beneath the petiole. Remainder of gaster smaller than the postpetiole, and projecting downward and forward, and supplied with a well developed sting.

Wings hyaline, straw-colored, extending beyond the tip of the gaster. One cubital cell, one discal cell, one large and one very small submarginal cell, is each present in the forewing.

Head, dorsal aspect of mandibles, thorax, petiole, post-