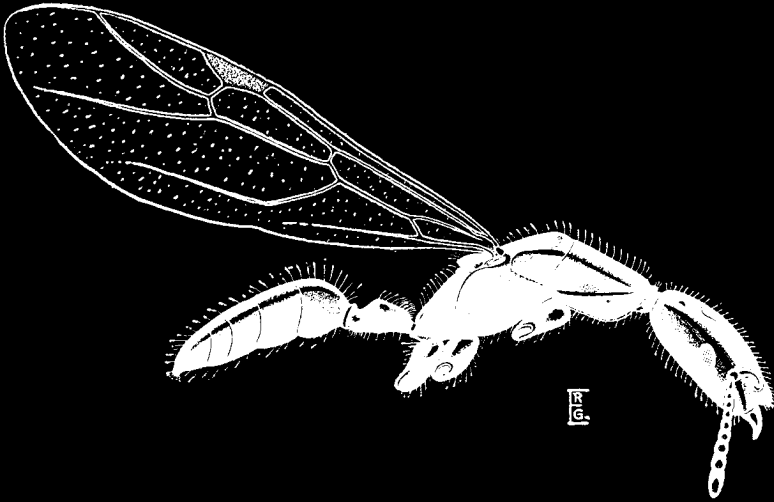


toward the tips, the last three segments considerably enlarged, and each longer than broad, but not forming a club. Mandibles narrow, each with three apical teeth and one indistinct denticle.

Thorax long and narrow, gradually widening to the insertions of the forewings and tapering posteriorly from that point. Prothorax from above long and somewhat resembling a truncated isosceles triangle; mesothorax about as wide as long. Thorax in profile convex; pronotum flat but sloping upward to the mesonotum which is angled just behind the promesonotal suture; scutellum raised. Sides of thorax flat. Epinotum without distinct basal and declivous faces, the entire dorsum sloping away rapidly from the



Text-fig. 2. *Camponotus (M.) cooperi*, profile.

metanotum to the articulation with the petiole. Petiole convex, low in front and rising gradually to a low broad node (no scale), whose posterior slope is concave; ventral surface smooth. From above, the petiole is rounded and almost oval in shape, though narrower in front and widening gradually to the apex of the node.

Gaster long, narrow, flat above, modified elliptical in