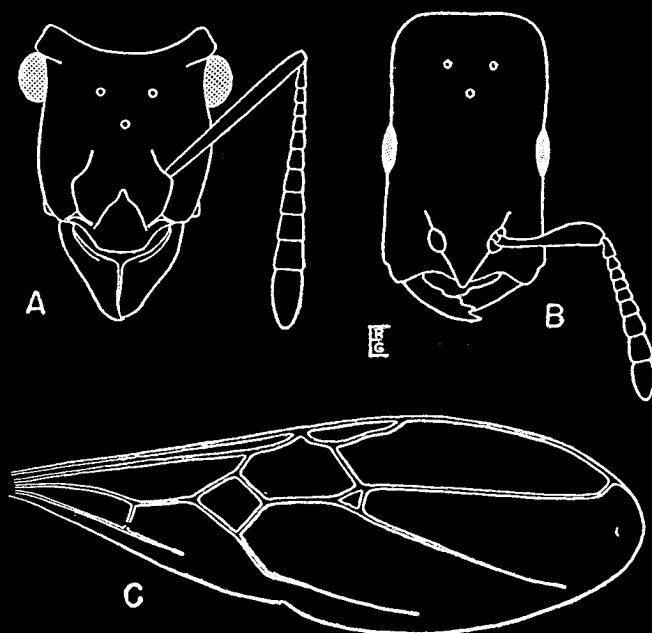


certainly distinct from the others and deserves to be recorded. No others in the subgenus have been described, as far as I am aware, since 1925 when Emery listed the then known species.



Text-fig. 3. A. *Stictoponera posteropsis*, head. B. *Camponotus* (*M.*) *cooperi*, head. C. *Stictoponera posteropsis*, wing.

*Camponotus cooperi* differs from its above named relatives, which are elephantine by comparison, in a number of additional particulars. The head, though elongate, is not concave on the occipital margin, as in *mirabilis*, and the sides are straight to slightly concave, not converging posteriorly as in *sphenocephalus*. The eyes are placed in the middle of the head and very much to the sides, whereas in *mirabilis* they are moved partially to the dorsal surface. The frontal carinae converge to a blunt point on the anterior margin of the clypeus, the antennae are inserted quite near