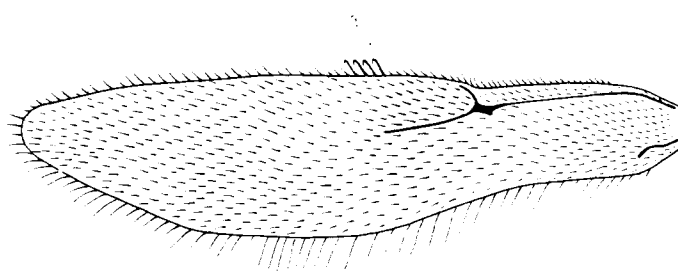
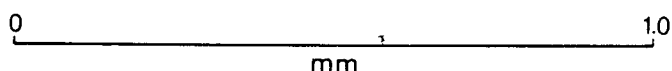


18



19

Figs 18, 19. *Rostratomyrmex pasohensis*, male: (18) fore wing; (19) hind wing.

reticulate with hairs in the pits. Knobs not recognizable under the light microscope (80x). Dorsum of mesoscutum dull, punctate. Punctures shallow, scattered, much more sparse than foveae of head. Scutellum with several large pits. Propodeum foveolate posterolaterally. Pronotum punctate laterally, remainder of pronotum and lateral sides of alitrunk dull with scattered, very shallow pits, absent on smooth and shining anterior and ventrolateral parts of katapisternum. Petiolar peduncle foveolate, laterally with pits extending to ventral and posterior parts of node. Petiolar and postpetiolar nodes from dorsal view dull, sculpture diluted. Pilosity on head including clypeus moderately dense. Hairs decumbent to suberect, mostly short,

about 0.025 mm long, on vertex and genae longer, up to 0.06 mm. Mandibles with some decumbent to appressed hairs, antennae with dense, decumbent to suberect pilosity. Eyes with short, suberect pilosity. Alitrunk dorsum, sides of petiole and postpetiole, and gaster covered with relatively sparse, appressed to suberect pilosity, occasionally longer hairs present. Scutellum with several long hairs (up to 0.06 mm) which arise from large pits. Remaining alitrunk bare, except for some hairs on anterior and dorsal parts of pronotum and on propodeum. Some short appressed hairs ventrally on petiolar peduncle.

Genitalia not examined.

*Type material.* - Holotype worker, West Malaysia: Negeri