

the residue being ejected in the form of a solid body, the 'Boulettes de nettoyage' of Janet, which retains the shape of the infra-buccal chamber."

After the pellet has been ejected it must still contain a considerable amount of nutritious matter, for, as I have shown, it forms the chief, if not the only food of the larva of the Dipterous genus *Microdon*, and also forms part of that of the beetle larva of *Clythra 4-punctata*. But to return to the Pseudomyrminae, all four genera feed their larvae in

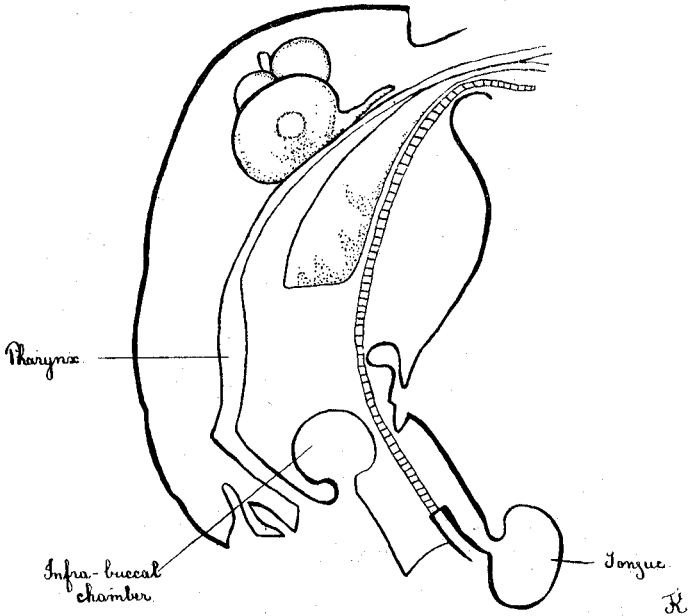


FIG. 3.—Head of *Myrmica* from "British Ants," p. 16.

this way; and no other ants have been observed to do so, but eventually spit them out. The mouth of the larva possesses a singular structure, the trophorhinium, with which they thoroughly grind up the pellet. This structure is also present in other ant larvae, and may be used as a stridulating organ.

In the adults the shape of the head in the ♀ and ♂, especially of the clypeus and frontal carinae, is unique; and the eyes