

A NEW STUDY OF *MESOXENA MISTURA* SMITH

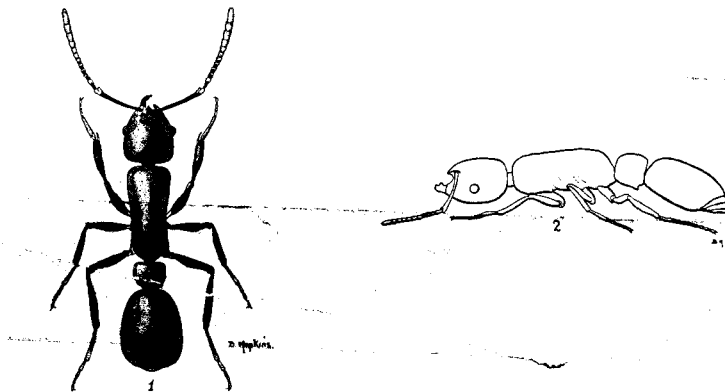
By HORACE DONISTHORPE, F.Z.S., F.R.E.S.

*(Department of Entomology, British Museum, Natural History.)*

*Mesoxena mistura* Smith, 1866, *J. Proc. linn. Soc. (Zool.)*, 4 (Suppl.): 107 (pl. 1, fig. 10); 1865, Mayr, *Novara Reise*, : 10; Dalla Torre, 1893, *Cat. Hym.*, 7 : 27; Emery, 1911, *Ann. Soc. ent. Belg.*, 55 : 219; 1925, *Gen. Ins.*, 183 : 212; Donisthorpe, 1932, *Ann. Mag. nat. Hist.*, (10) 10 : 462.

I HAVE drawn up the following more elaborate description to supplement the original description of this ant :—

Black, extreme apex of scapes and funiculus of antennae, eyes, apex of teeth of mandibles, last three visible segments of gaster and legs yellow-brown, apex of funiculus, articulations of the joints, and tarsi lighter. Whole body finely coriaceous and covered with a very sparse grey pubescence; head and thorax with some small scattered punctures. *Head* slightly longer than broad, narrowed in front, sides and base rounded, joined to thorax by a distinct neck; *eyes* round, very prominent; *mandibles* strong, curved, terminal border furnished with five teeth (the three apical ones sharp, subequal, the two basal ones shorter and blunter), not meeting in the same plane as the rest of the mandibles, but at an angle



FIGS. 1-2.—*M. mistura* Smith.

beneath; *frontal carinae* furnished with a lobe; *antennae* long, 12-jointed; *scape* when bent back reaching beyond posterior corners of the head, shorter than funiculus, *funiculus* increasing in breadth to apex, 1st joint long, 2-8 subequal in length, 9 and 10 longer, last joint the longest. *Thorax* long, cylindrical, over twice as long as broad, at the greatest width, which is at apex, slightly contracted a little below the middle, with no sign of divisions into segments when seen from above (when seen from the side some very faint traces of such may be seen), truncate at apex with anterior angles rounded, rounded at base (the *epinotum*), the declivity of which is also rounded. *Petiole* massive, broader than long, as long as high, furnished with a blunt tooth near apex beneath, sides rounded, base subtruncate, apex rounded, the basal and apical declivities flat. *Gaster* longer than broad, narrowed at base, broadest at apex of first segment which is very long, nearly covering the succeeding segments when seen from above. *Cloacal orifice* round, terminal, surrounded by a fringe of hairs. *Legs* long, the intermediate and posterior tibiae furnished at apex with two small, inconspicuous spurs, the inner one being considerably the thicker.

*Long.* 4.7 mm.

PROC. R. ENT. SOC. LOND. (B) 5. PT. 6. (JUNE 1936.)