

Craw., *M. hilli* Craw., etc. ; but is quite unlike them in structure, sculpture, etc.

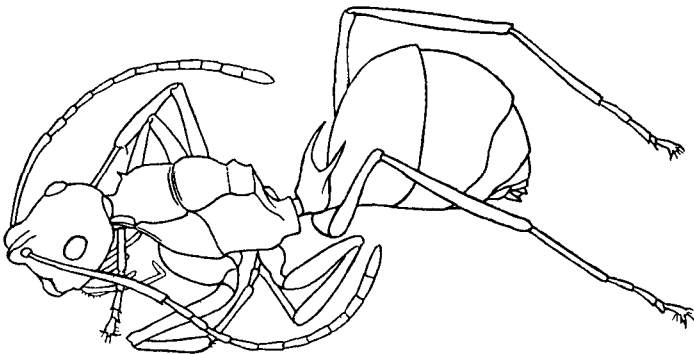
It is possible that the almost hairless condition of this insect may have been caused by its having been rubbed.

DOLICHODERINÆ Forel.

Dolichoderus (*Irenea*, subgen. nov.) *omyrmex*, sp. n.

♀. Head, thorax, petiole with spines, and scapes deep black, funiculi with first five joints at base, gaster, and legs brown, insertion of antennæ, maxillary and labial palpi, apex of mandibles, apex of first joints, and the last six joints of funiculi, and apex of tarsi yellow. Head, thorax, and petiole coriaceously sculptured, the dorsum of thorax, especially the pronotum, being longitudinally striate ; gaster and legs very finely and closely punctured.

Head oblong oval, gradually narrowed from eyes to apex of mandibles, more sharply rounded from eyes to posterior border, the space between much shorter than from eyes to tip of mandibles ; in profile the head with



Dolichoderus (*Irenea*, subgen. nov.) *omyrmex*, sp. n.,
in profile.

the frontal carinæ as high as long ; *mandibles* very finely striate and punctate, armed with five sharp teeth, decreasing in length and sharpness from the apical one ; *clypeus* large, convex, with a strong central carina, anterior border somewhat deeply emarginate and bidentate in centre ; *frontal area* obsolete ; no *frontal furrow* ; *frontal carinæ* high and sharp ; *eyes* large and projecting, placed