

is a pubescent tuft like that of *A. abnormalis*. The outer one of the 3-5 spines is small and pointed and is separated from the horn by a tooth-shaped projection of the style; the remainder have rounded ends but are not spatulate. Lower part of expanded end of style bare. Coxite broad in middle.

Wing-length: 3.8-4.3 mm.

Larva and pupa: unknown.

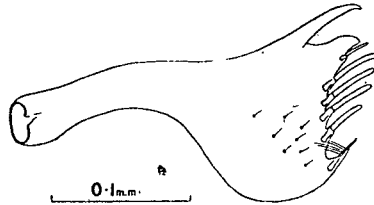


FIG. 1.—*Aedes eritreae* sp. n., style of male.

ERITREA: Acchele Guzai, Debre Axum (near pool 20.3 km. from Saganeiti along Dessie road), c. 6500 ft., 11 ♀ and 4 ♂, 27.iv.42 (including types) and 30.iv.42; females biting at mid-day, males on rocks. The types will be sent to the British Museum (Natural History).

The species is allied to *A. abnormalis* Theobald, 1910, from which it differs principally in having narrow scales on the vertex and a knee spot on the hind femur of the ♀, and in the form of the ♂ style. In the key given by Edwards (1941, *Mosquitoes of the Ethiopian Region* 3: 159) it would run to couplet 34. The following sentence would indicate the species: "Head with decumbent scales in ♀ almost all pale and in ♂ all pale: abdominal tergites with complete pale bands."

NOTES ON THE GENUS *PSEUDOLASIUS* EMERY WITH THE DESCRIPTION OF *PSEUDOLASIUS KARAWAJEWI* SP. N. (HYM., FORMICIDAE)

By HORACE DONISTHORPE, F.Z.S., F.R.E.S.

Pseudolasius karawajewi sp. n.

♀. Yellow, mandibles reddish-yellow, teeth of mandibles and eyes black, clothed with yellow outstanding hairs, some of which spring from small raised points, and sparse fine pubescence. Practically impunctate, more or less smooth and shining. Head subquadrate, slightly broader than long, broadest behind, sides of head slightly rounded, posterior angles distinct, posterior border almost straight; *mandibles* long, powerful, marked with faintly raised longitudinal ridges and shallow obscure punctures, masticatory border armed with 5 sharp teeth, the 3rd being the smallest; *clypeus* transverse, narrowly margined, very convex on disc with no sign of a keel or carina, anterior border almost straight, obliquely cut off on each side, anterior angles distinct, posterior border sinuate in middle, *clypeal* and *antennal foveae* not confluent; *frontal area* ill defined; *frontal carinae* short, almost straight and parallel, a short sharp distinct longitudinal raised ridge or carina is present in centre