

transversely striate, and armed with two short sharp teeth at base. Petiole, post petiole and gaster smooth and shining; *petiole* long and narrow, furnished at apex with a node which is rounded above, and slightly broader than peduncle; *post petiole* rounded at sides and above, slightly broader than petiole, with a very short tooth or projection beneath pointing forwards; *gaster* round oval, first segment taking up the greater part of the gaster above. *Legs* long, *femora* and *tibiae* spindle-shaped. Length 4.5-5 mm.

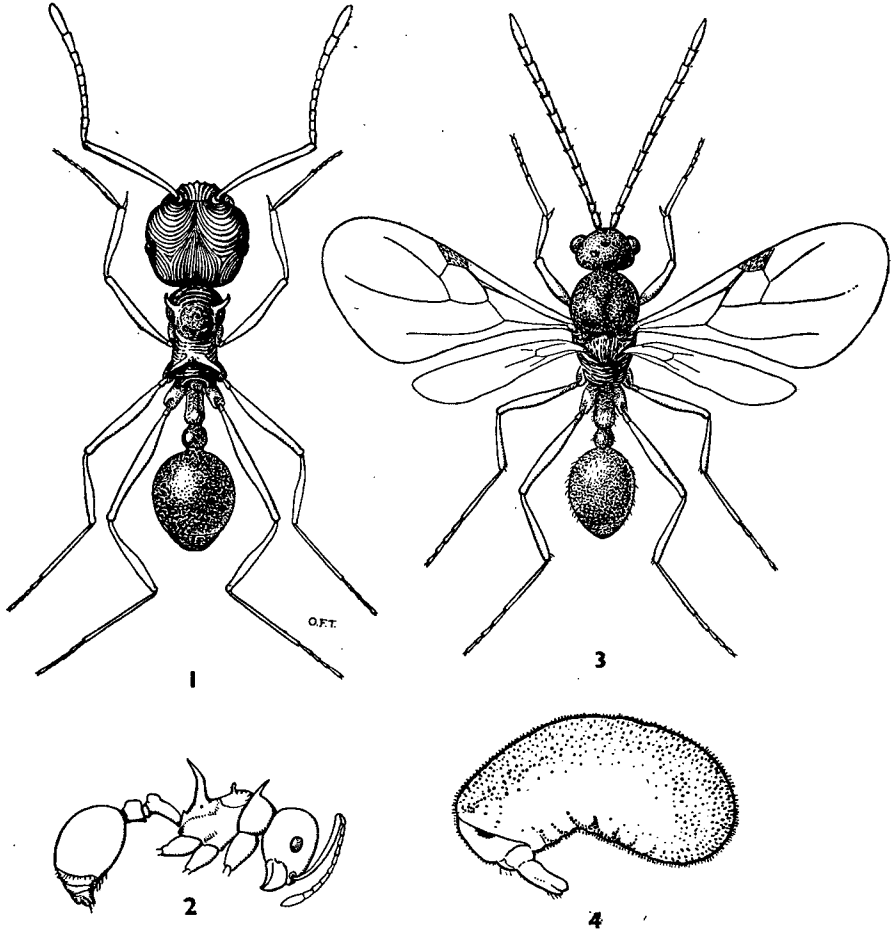


FIG. 1.—*Dodous trispinosus* sp. n. ♀.

FIG. 3.—Male.

FIG. 2.—*Dodous trispinosus* sp. n. ♀ in profile.

FIG. 4.—Larva.

♂. Shining dark reddish-brown, legs and antennae somewhat lighter, clothed with more abundant outstanding hairs than in the ♀. *Head* transverse, cheeks, posterior angles, and posterior border rounded; *mandibles* undeveloped, represented by very small round hairy bosses; *clypeus* transverse, convex, anterior border rounded; gradually becoming straighter towards the temples and base; *frontal carinae* very short, divergent; *eyes* large, very prominent, situated on each side of the head; *ocelli* moderate, anterior ocellus slightly larger than the other two, situated in a slight depression; *antennae* 12-jointed, all joints longer than broad, *scape* short, only a little longer than 1st joint of *funiculus*, all the other joints longer and of about equal length and breadth, except the last, which is longer and pointed, about equal in length to the two preceding taken together. *Thorax*