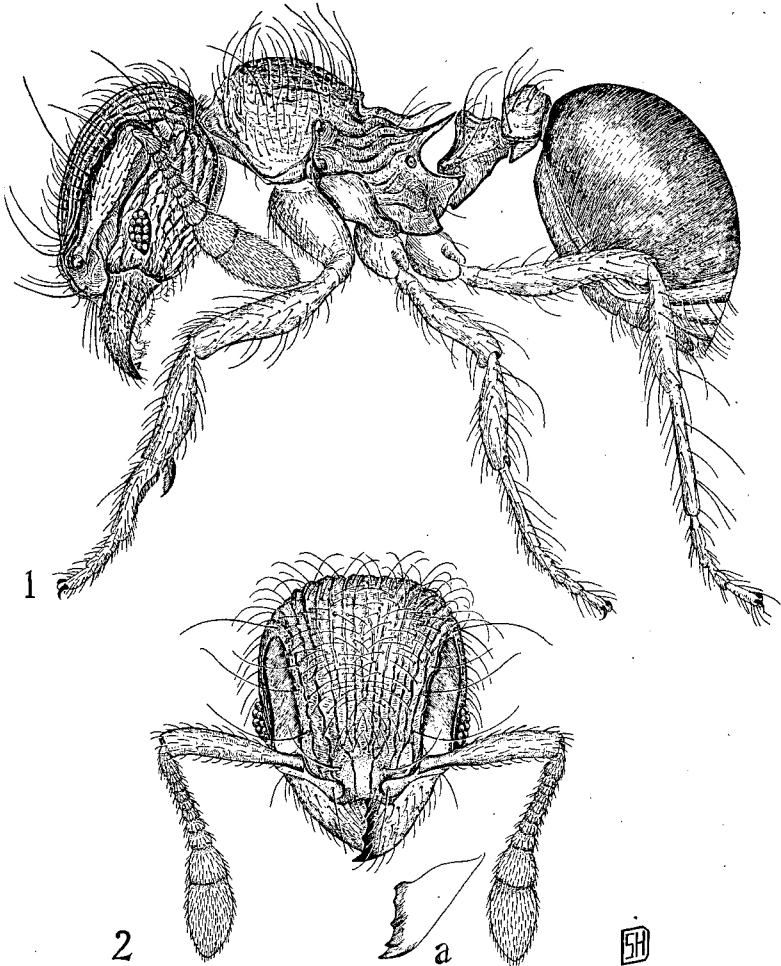


Head distinctly longer than broad (approximately one and one-tenth times as long as broad). Mesonotum, in profile, meeting the mesoepinotal impression in a very distinct angle. Epinotal spines neither unusually long nor directed dorsally at a very pronounced angle. Sculpturing of head and thorax mainly rugulose.....*haskinsi*, new species

Head not distinctly longer than broad. Mesonotum, in profile, not meeting the mesoepinotal impression in a very distinct angle. Epinotal spines unusually long, directed dorsally at a very pronounced angle. Sculpturing of head and thorax very coarse, mainly rugulose reticulate. (Color dark reddish brown).....*scrobiculatus* Wheeler



*Lachnomyrmex haskinsi*, new species. Fig. 1.—Profile of worker. Fig. 2.—Head; a, mandible. (Illustrations by Sara H. DeBord.)