

Reprinted from 'The Entomologist's Monthly Magazine,' Vol. lxxxv.

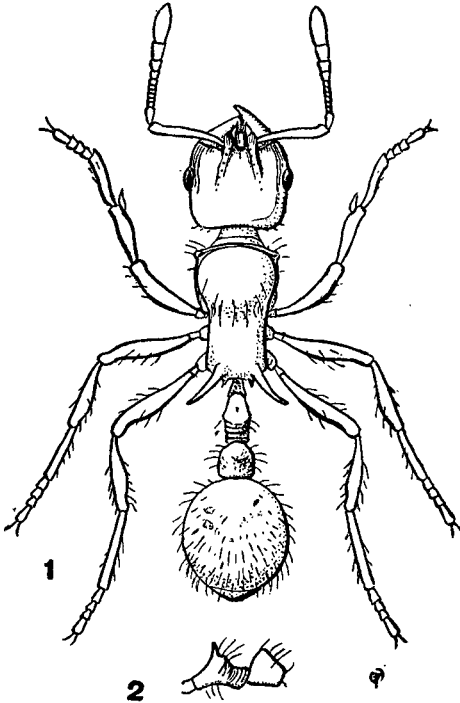
Date of publication; April 25th, 1949.

BY HORACE DONISTHORPE, F.Z.S., F.R.E.S., ETC.

Lordomyrma bensoni sp.n.

♀. Black shining; mandibles, clypeus, antennae, legs and epinotal spines reddish, clothed with sparse, longer and shorter outstanding hairs.

Head without mandibles subquadrate, with a few very fine small sparse punctures, posterior angles rounded, posterior border slightly excised in middle; *mandibles* rather large, triangular, smooth and shining with a very few fine punctures at base, apical tooth sharp, masticatory border armed with a few very small denticles; *clypeus* straight in middle of anterior border sinuate on each side, bluntly pointed posteriorly, margined on each side, and projecting between the frontal carinae; *frontal carinae* with lobes which are longitudinally striate, divergent behind, with a row of punctures along the divergent parts; *frontal area* indistinct; *frontal furrow* consisting of a very short longitudinal line; the anterior part of the head on *cheeks* and along sides of eyes longitudinally striate; *eyes* moderate, round, convex; *antennae* 12-jointed; *scape* not quite reaching posterior border of head, *funiculus* increasing in breadth to apex, with 3-jointed club, 1st broader and longer than the next 5 joints, 2-7 transverse, last joint long and pointed, longer than the two preceding taken together. *Thorax* robust, with a fairly broad neck, longer than broad, narrowed to base, broadest at humeral angles; *pro-mesonotum* very convex and rounded; *pronotum* with a strongly margined border above neck and projecting flattened humeral angles; impression between meso- and epinotum rather wide and deep; *epinotum* armed with two long sharply pointed divergent spines, curved and pointing outwards, *declivity* concave. *Petiole* with a rather long peduncle and sharply pointed node; *post-petiole* slightly broader than petiole, rounded at sides, bluntly pointed above; *gaster* round, very slightly longer than broad, first segment considerably longer than the rest. *Legs* moderately long. *Long.* 3.8 mm.



Figs. 1-2.—1, *Lordomyrma bensoni* sp.n.;
2, side view of petiole and post-petiole.

Described from two workers, Maffin Bay, DUTCH NEW GUINEA, August, 1944, E. J. Ross Coll. Type in the Science Museum, California Academy of Sciences.

The spines in this species are longer and more divergent than in any others of the genus; being like those of some species of *Acidomyrmex*.

This species is described in honour of my friend Mr. R. B. Benson, the eminent authority on the Tenthredinidae (sawflies).

British Museum (Nat. Hist.), London, S.W.7.
July 10th, 1948.