

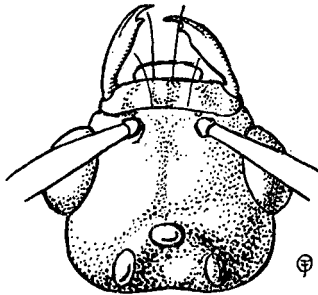
## Tribe ACANTHOMYOPSINI.

*Pseudolasius sexdentatus* Donisthorpe, Ann. Mag. Nat. Hist. (s. 12), i. p. 757 (1948) 1949 ♀.

♂.—Undescribed. Dirty pale brownish yellow, legs and antennæ pale yellow, top of head infuscate, two brownish narrow longitudinal stripes on thorax in some specimens, eyes black. Clothed with fine yellowish pubescence, and sparse longer and shorter yellow outstanding hairs, thickest at apex of gaster.

*Head* subquadrate, a little broader than long; posterior angles rounded, posterior border almost straight; *mandibles* long, narrow, with a sharp tooth at apex, no other teeth to masticatory border; *clypeus* transverse, convex

Fig. 3.



*Pseudolasius sexdentatus* Donisthorpe. Head of ♂.

on disc, anterior border rounded, posterior border slightly extending between frontal carinæ; *frontal carinæ* short; *frontal area* indistinct; *frontal furrow* reaching median ocellus; *eyes* large, round, prominent, situated in front of middle of sides of head; *ocelli* large, situated on top of vertex of head; *antennæ* 13-jointed, *scape* extending for about one-third of its length beyond posterior border of head, 1st joint of *funiculus* not broader but a little longer than 2nd, last joint a little longer than the two preceding taken together. *Thorax* robust, considerably broader than head, longer than broad, narrowed to base, broadest before insertion of forewings; *pronotum* transverse, narrow, furnished with a neck; *mesonotum* large, transverse, convex, overhanging the pronotum; *præscutellum*