

than head, pronotum short and convex. Mesonotal border horizontal and twice as long as broad, scutellum prominent, propodium vertical and slightly concave, node broader than long, with lateral borders raised and convex, superior surface concave, ventral surface prolonged into a strong keel. Anterior surface convex, posterior concave. Legs short, femora compressed throughout, tibia and first joints of tarsi incrassate.

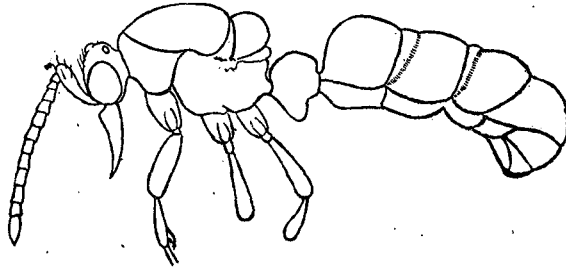


FIG. 4. *Ænictus* (*Typhlatta*) *martini* Forel; male undescribed.

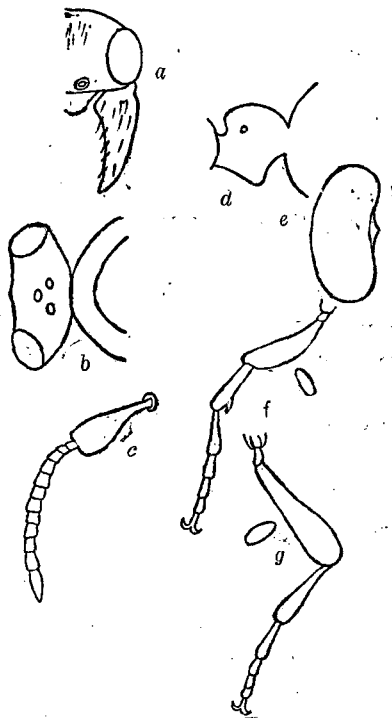


FIG. 4. *Ænictus* (*Typhlatta*) *martini* Forel (undescribed): a, front view of head; b, dorsal view of head; c, antennæ; d, side view of petiole; e, dorsal view of petiole; f, section of foreleg; g, section of posterior leg.