

on the node. Gaster smooth and shining. Few erect hairs on clypeus, more scattered over front of head, with short hairs on propodium, last segment of gaster, posterior surface of coxa, with fine hairs on tarsi. Head, antennæ, alitrunk, node and gaster reddish yellow. Mandibles and legs more yellowish.

Ecological notes: One specimen was taken by Domingo Empeso, at Soco, Dapitan, Mindanao, in 1947. The worker was crawling on the ground very near a large rotten log. He searched for others but did not find any. A few weeks later he flew back to break open the log. Farmers in the meantime had cut all the brush and piled it on the log and burned it.

This is a most striking ant. Two other species have been reported from workers in the Philippines: *rugosus* Mayr, from Mount Makiling (Coll. Baker), and *macgregori* Wheeler and Chapman, from Biliran (Coll. MacGregor). A male, *medi-niger*, described by Donisthorpe in 1942, was collected on Mt. Banahao, in 1924, by Baker. None of these resemble *empesoi* in any way, except in size.

Subfamily MYRMECINÆ Lepeletier

Tribe PHEIDOLINI Emery

Genus PHEIDOLE Westwood

8. *PHEIDOLE FANTASIA* sp. nov.

Figs. 6a-c.

*Major workers*.—Total length, 2.78 mm. Head length, 1.04 mm; head width, 0.93 mm; head depth, 0.56 mm; length of scape 0.41 mm; length of alitrunk (Comstock), 0.81 mm; cephalic index, 89.

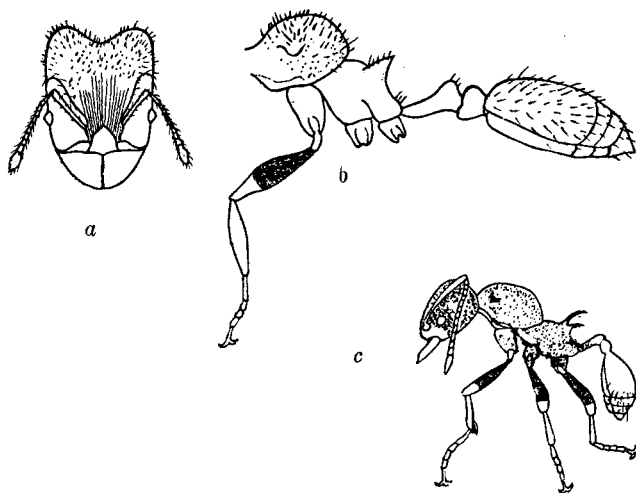


FIG. 6. *Pheidole fantasia* sp. nov.; a, front view of head of major worker; b, side view of major worker; c, side view of minor worker.