

peus, frontal carinæ, fossa, genæ, antennæ ivory-white; nodes of petioles, gaster, apical part of femora, tibia and tarsi white; posterior part of head, thorax, peduncle of petiole, coxa, and part of femora brown.

*Female*.—Total length, 3.22 mm. Head length, 0.93 mm; head width, 0.81 mm; head depth, 0.55 mm; length of scape, 0.45 mm; length of alitrunk (Comstock), 1.18 mm; cephalic index, 88.

Head with mandibles longer than broad, sides slightly curved, occipital border feebly concave, corners rounded. Frontal carinæ raised in front, diverging toward corners of head and forming marked scrobes, scape reaching posterior fourth of head. Mandibles short, stout, lacking prominent individual teeth. Eyes large, situated at transverse middle of head, ocelli prominent. Dorsum of pronotum flat, base of propodium forming a concave declivity, the short stout spines are broad at the base. Petiole and postpetiole nodes broader than long. Gaster, as in the major worker, a little longer than broad. Head, thorax, nodes, and gaster like those of the major workers; mandibles, clypeus smooth and shining; scrobes finely punctate;

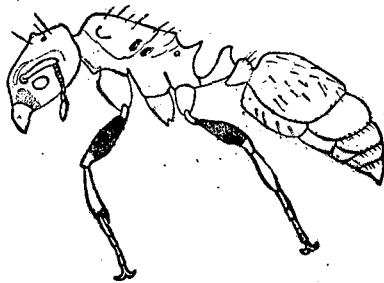


FIG. 6. *Pheidole fantasia* sp. nov.;  
female.

legs and middle of the petiole smooth and shining. Head, thorax, nodes and gaster with sparse erect whitish hairs, dorsal surface of gaster with golden hairs. Color of mandibles and anterior part of head as in major workers. Thorax dark-brown to black; legs, reddish brown, with apical part of femora, tibia and tarsi, and tip of gaster white.

Ecological note: Workers of this species were found crawling on a log which I was cutting up for firewood during the war. The log came from a reserve pile, saved when we cleared the ground around our evacuation house in the forest. It was fully