

spines directed outward, forward and downward at tips. Promesonotal suture barely showing on side, indistinct dorsally, base of propodium and declivity subequal, with slender acute spines, twice as long as pronotal spines, directed outward and backward. Declivity concave, terminating below in a marginate disk, that fitting into similar disk on front of petiolar node. Node above disk on petiole vertical, with superior surface flat, sides forming base of long diverging spines that curve around base of gaster, which is as broad as long and barely petiolate. Head, thorax, and nodes of petiole foveo-reticulate. Mandibles, scape, spaces between spines of propodium and node of petiole, gaster, and legs smooth and shining. Scattered erect-hairs on scape, mandibles, front and sides of head, thorax, posterior borders of tergites and sternites. Funiculus and last joints of tarsi pubescent. Mandibles, occipital region of the head, thorax and petiole dark red. Tips of spines and gaster black. Antennæ and legs yellowish red.

*Female*.—Total length, 7.39 mm. Head length, 1.66 mm; head width, 1.42 mm; head depth, 1 mm; length of scape, 1.85 mm; length of alitrunk (Comstock), 1.96 mm; cephalic index, 85.

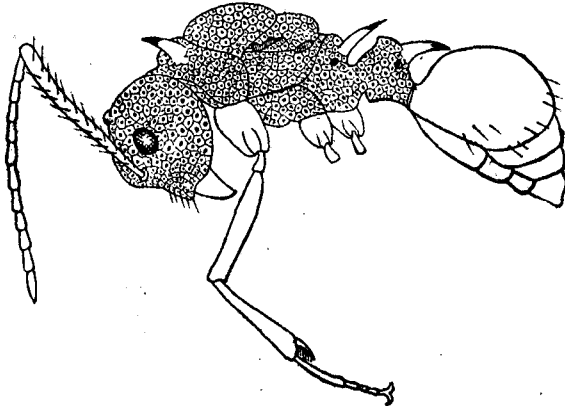


FIG. 8. *Polyrhacis* (*Myrmhopla*) *etheli* sp. nov.; female.

Head and petiole shaped like those of worker. Thorax robust, spines on pronotum and propodium shorter and stouter, not so black at tips. Gaster as broad as long, first tergite covering at least two-thirds of surface. Sculpture like that of worker, fovea somewhat shallower, disks on declivity and front of node much larger, node much stouter and rounded at