

- Colour brownish to brownish black, back of head straight or convex . . . . . 7
- 7 Head nearly as wide as alitrunk; frontal furrow clearly marked; wings infuscate . . . . . *brunneus*
- Head distinctly narrower than alitrunk; frontal furrow obscure; wings completely clear . . . . . *alienus*

***Lasius alienus* (Foerster, 1850) (Fig. 1)**

*Diagnosis.* Worker. Unicolorous brownish black or greyish black, similar to *niger* but in general somewhat smaller. Suberect hairs absent or much reduced in number on scapes and tibiae. Ocelli absent or difficult to discern.

Female. Greyish black. Size large relative to worker. Head distinctly narrower than alitrunk. Suberect hairs absent on scapes and fore tibiae often present in reduced number on hind tibiae.

Male. Greyish black. Wings clear. Mandibles edentate. No suberect hairs on scapes or tibiae. Head without distinctly marked frontal suture.

*Himalayan distribution.* PAKISTAN:

Naran, Kagan, 2600 m, ♀♀ (NHMB). KASHMIR: Pahalgam, 3100 m, ♀♀. Kohala, 1000 m, ♀♀ (NHMB). Other records. Kashmir: Srinagar (Wilson, 1955).

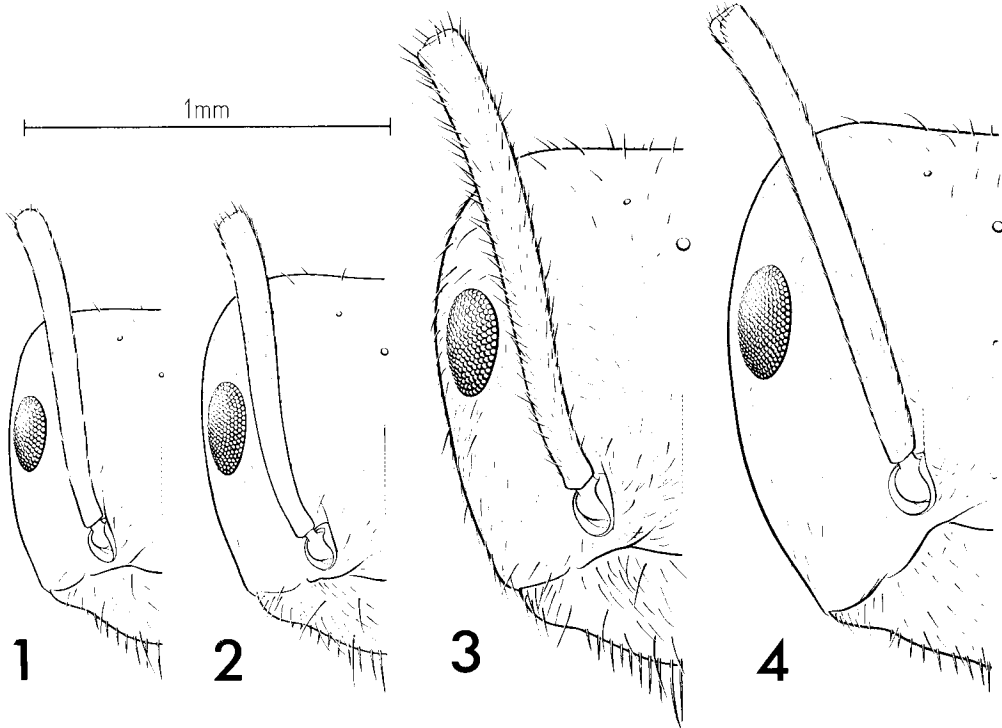
*General distribution.* Wide-ranging Holarctic; Eastern North America to Japan.

*Discussion.* No queens or males from the Himalayas are available for comparison with European material but the series of workers taken are typical except for those from Pahalgam where some specimens have widely spaced suberect hairs on all tibiae.

***Lasius brunneus* (Latreille, 1798) (Figs. 2 and 11)**

*Diagnosis.* Worker. Bicoloured with head and alitrunk pale brownish, contrasting with darker gaster. Ocelli small but clearly visible. Tibiae and scapes always entirely lacking standing hairs.

Female. Dark reddish brown. Head relatively



FIGS. 1-4. Half heads, dorsal view. 1, *Lasius alienus*; 2, *Lasius brunneus*; 3, *Lasius niger*; 4, *Lasius fuliginosus*.