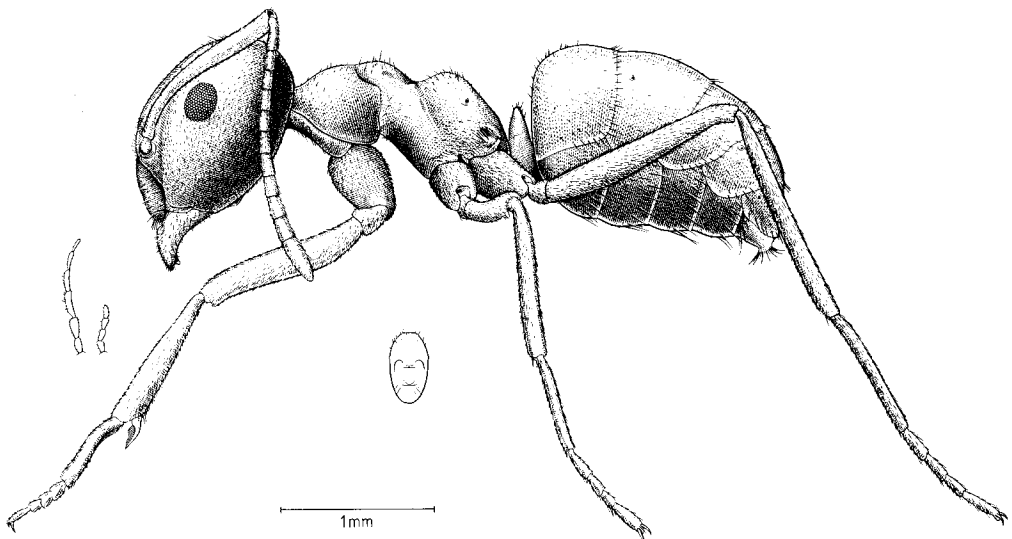
FIG. 14. *Lasius carnitolicus*, worker profile.

Yamauchi & Hayashida (1970) point out a remarkable difference in the shape of the male subgenital plate between *sakagamii* and *niger*. Males from Tatsienlu, China, appear to be somewhat intermediate between the two extremes figured by Yamauchi & Hayashida (1970) and show some variability but more or less approach the *sakagamii* type. On the other hand, workers associated with these males are typically *niger* for the SSC but the colour is nearly uniformly yellowish. Clausen

(1938) figured a subgenital plate from a typical specimen from a *niger* population from Zurich, Switzerland, that corresponds closely with that drawn for *sakagamii*.

Some Japanese *niger* populations do show remarkable differences from corresponding European populations, the SSC varying between 36 and 47 compared with 13–25. However, even a subspecific separation between Eastern and Western populations appears untenable when peripheral island

FIG. 15. *Lasius fuliginosus*, worker profile.