FIG. 22. *Lasius draco*, worker profile.

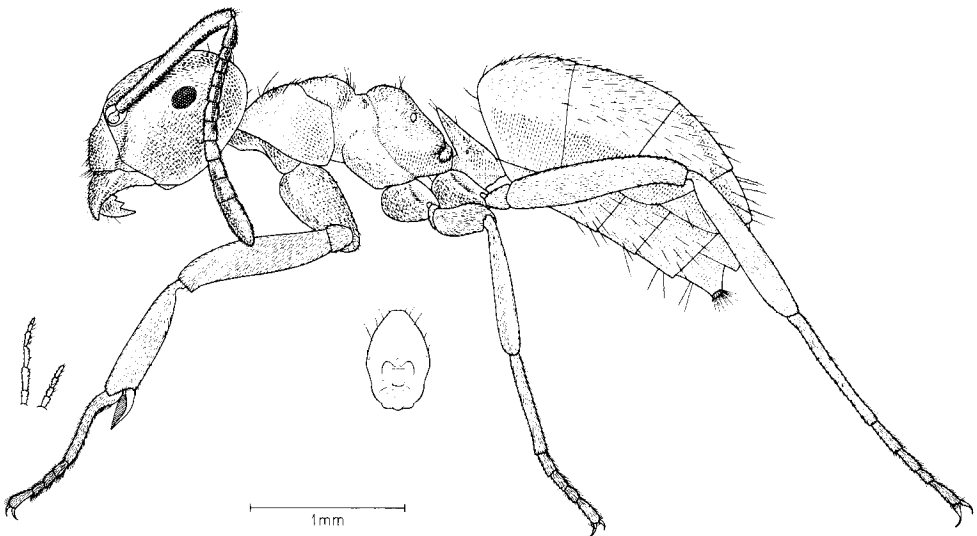
pilosity and from *L. meridionalis* Bond and *L. rabaudi* Bond by the strongly convex petiole. The Nobding series was collected from under a stone. The Sampa Kotoka workers were collected from soil.

***Lasius mikir* sp.n.** (Figs. 10 and 23)

Diagnosis. Worker. A southern species related to *crinitus* but with reduced and more adpressed body pilosity, clearer body colour and more parallel-sided head.

Description. Worker. Total length 3.9–4.6 mm. EL 0.17–0.21 mm; EW 0.13–0.16 mm; HL 1.17–1.30 mm; HW 1.09–1.22 mm; SL 1.01–1.12 mm; OI 62.50–85.71; CI 91.30–94.00; SI 91.49–97.62.

Head robust with subparallel sides and feebly emarginate occipital border. Eyes relatively large: their maximum diameter about twice the maximum scape width. A smooth trace of frontal furrow. Antennae elongated. Mesosomal dorsum slightly higher than the propodeum in side view. Petiole thin, with plane and superiorly converging

FIG. 23. *Lasius mikir*, worker profile.