

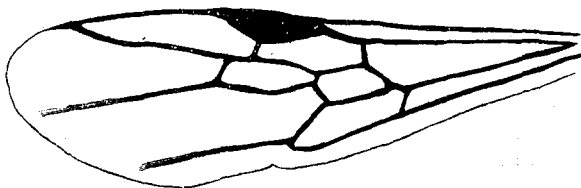
Reprinted from 'The Entomologist,' February, 1916.

## A NEW SPECIES OF PONERINE ANT CAPTURED BY AN ASILUS.

BY W. C. CRAWLEY, B.A.

In an interesting and extensive collection of African Asilids and their prey, made by Mr. S. A. Neave in Nyasaland in 1913 and 1914, is a number of ants. As might be expected, the majority of these are males and females, probably captured by the fly during their marriage flight, but there are also a few worker forms, all of tree-climbing species, notably *Polyrhachis* and *Camponotus*.

Many of the males that are unaccompanied by workers are almost impossible to identify, and some of the females are also difficult for the same reason; consequently I have thought it



Upper wing of ♀ of *Promyopias asili*.

better to publish first the description of the most interesting specimen, as it belongs to a rare and little-known genus.

### *Promyopias asili* sp. nov.

♀. L. 7.1 mm. Mandibles linear, as long as the head, with 3 teeth at the apex, the apical tooth blunt, the intermediate very small and acute, and the inner one acute, larger than the intermediate, but smaller than the apical; strongly curved from the inner tooth for more than half their length, where they form a blunt tooth, and from this point to the base they are considerably thickened. The clypeus forms a narrow border along the mouth, is raised in the middle, and slightly produced in an angle between the frontal carinae. The latter are short, hardly, if at all, overhanging the clypeus. Head without the mandibles rectangular, slightly broader than long, the occipital margin almost straight, with rounded angles. The frontal groove reaches the anterior ocellus. Eyes placed in the fore part of the sides of head, occupying the second quarter. The scapes do not quite reach the occipital margin, just passing the posterior fifth. The first joint of the funiculus only slightly longer than the second, and joints 3-9 are as broad or broader than long; the last 5 gradually thicken to the apex, the apical equalling the two preceding joints taken