

W. C. CRAWLEY, B.A., F.E.S.

*A new species of Ant imported into  
England.*

---

---

[Reprinted from *The Entomologist's Record*, Vol. XXXII., No. 10.]

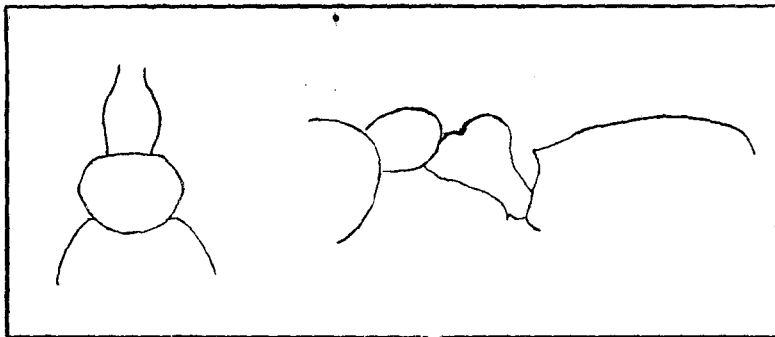
1920

## A new species of Ant imported into England.

By W. C. CRAWLEY, B.A., F.E.S.

*Cardiocondyla* **Britteni**, sp. nov. Fig.

♀. Length 1.8 mm.

THORAX AND PEDICEL OF *CARDIOCONDYLA BRITTENI*, SP. NOV.

*Colour* red-brown, shining; scape, 1st joint of funiculus, mandibles and legs, yellow; rest of funiculus, the epinotum, and gaster, dark brown; head, thorax, and pedicel, reddish, front of head darker.

*Pilosity.* A few short adpressed hairs on body, principally on head and gaster; legs and antennæ without hairs.

*Structure.* *Head.* excluding mandibles,  $\frac{1}{2}$  longer than broad, widest at eyes, which are placed at anterior third of sides of head; sides feebly convex, occipital border slightly concave. Scaopes reach the posterior  $\frac{1}{4}$  of head. Club much longer than rest of funiculus, the last joint alone equalling the following eight; joints 2-8 of funiculus thicker than long.

*Thorax* somewhat stout; seen from above very slightly constricted at meso-epinotal suture, which is almost obsolete. In profile the dorsum presents an unbroken slightly convex line, with only the faintest suggestion of an impression at the junction of meso- and epinotum.

*Epinotum.* First half of base of epinotum in a line with dorsum of thorax thence descending in a gentle curve to the spines, which are short and thick, slightly directed outwards, as long as broad at their bases.

*Pedicel.* First node from above longer than wide, the sides almost parallel; second node nearly twice as wide as first,  $\frac{1}{2}$  wider than long, widest in centre, the anterior border almost straight; in profile the stalk of the petiole is not quite so long as the rest of the segment, and bears a minute tooth underneath in front; the first node is higher than the second, and rounded.

*Gaster* oval.

*Sculpture.* *Head* covered with a fine puncturation which grows sparse and faint as the occiput is reached; the sculpture does not dull the surface. Mandibles smooth and shining.

*Thorax* very sparsely and shallowly punctured, similarly to the occiput, the punctures almost disappearing towards the epinotum.

*Epinotum.* Sides finely granulate, the rest smooth and shining.

*Pedicel* almost impunctate.

*Gaster* entirely smooth and shining.

A single ♀ was taken by Mr. H. Britten among butter beans, at West Didsbury, on May 12th, 1919. It is highly probable that the ant was imported with the beans, in which case its place of origin would be tropical America, but beyond this there is no clue.

It is remarkable for its smooth and shining integument, not even the head being rendered opaque by the sculpture. The petiole is narrower than in *emeryi*, For., the postpetiole is wider in proportion to its length and the sides more angular, and the spines on the epinotum

shorter and thicker; compared with *nuda*, Mayr., the postpetiole is wider still in proportion to its length. The shape of the pedicel, as seen from above, appears to come nearest to *batesi*, For., but both nodes are higher in profile.