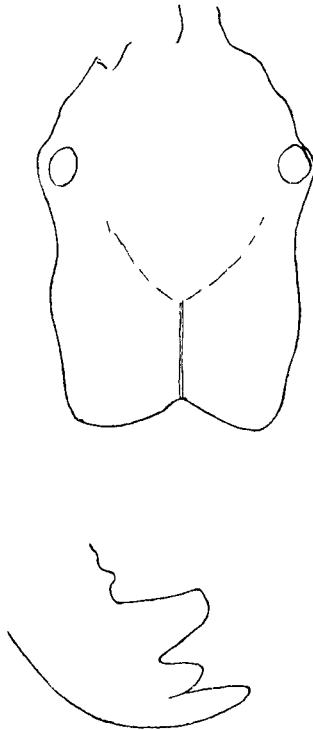


Whole of head above and below, including the fossæ, finely striated right up to the occiput. The occipital groove extends from the edge of the depression to the occiput, deep.

The striæ on top of pronotum in front are spiral, on the hinder part they are transverse. On the rest of thorax they are transverse, much coarser on the base of epinotum. The declivity has a few coarse transverse striæ.

Fig. 3.



Head and end of mandible of *Odontomachus rugiceps*, Sm., type.

Back of node quite smooth, the front has transverse striæ.

Gaster microscopically reticulate.

Forel's race *acutidens* (*l. c.* and *Ann. & Mag. Nat. Hist.* ser. 9, vol. vii. p. 90, 1921) varies in length from 7.5 to 10.0 mm. or more, the largest ♀ almost deserving the name of "soldier."