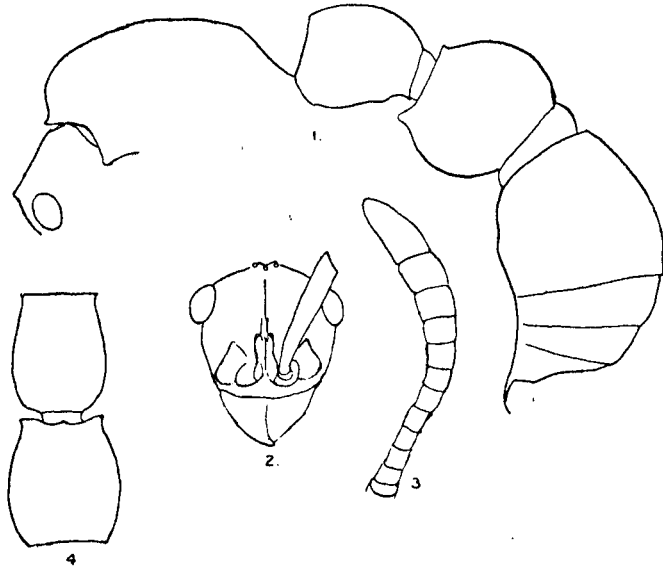


it is not quite twice as thick; it reaches to the top of the ocelli. Funiculus twice as long as scape (*v.* characters of genus).

Thorax very massive, evenly convex in both directions. The sharply bordered anterior margin of the pronotum is continued laterally in an S-shaped curve, ending in a blunt angle below. From above the thorax is slightly narrower in front, the sides convex for their posterior two-thirds. Declivity of epinotum feebly concave.

Fig. 1.



*Chrysapace jacobsoni.*

1. Side view of body.
2. Front of beak, head
3. Funiculus (on slightly larger scale).
4. Pedicel from above.

Petiole from above nearly once and a half as long as broad, slightly broadening posteriorly to a point about one-sixth from the end, where it narrows rapidly to its bordered extremity, which is more than one-half as wide as the anterior extremity, which is also bordered. In profile the anterior border is truncate, the upper surface convex, descending rapidly posteriorly. Postpetiole from above as broad as long, broader posteriorly, the sides convex. Anteriorly it is