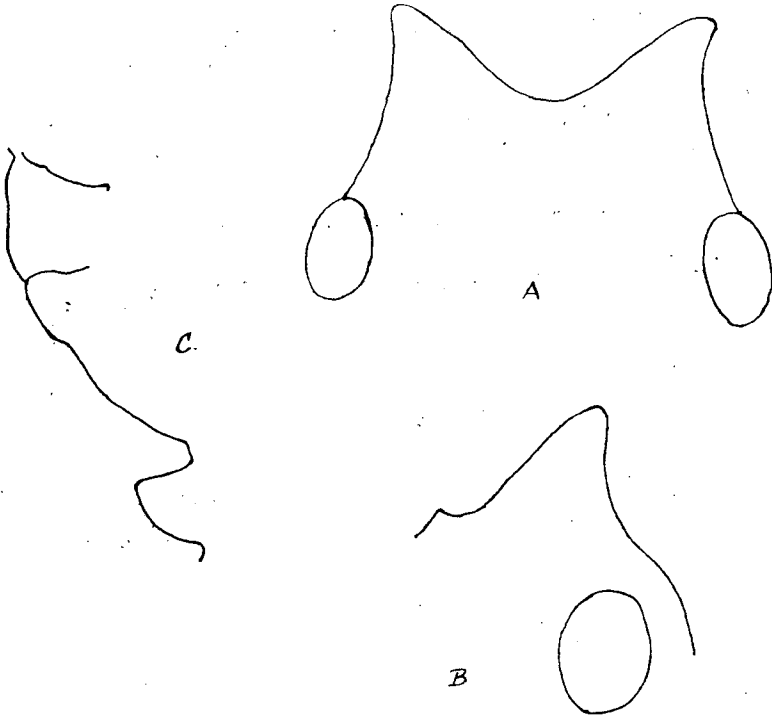


profile higher in front, where it is almost straight, the top evenly sloping. From above it is barely longer than wide, and twice as wide behind as in front. Down the centre runs a deep narrow impression. Beneath anteriorly is a small spine perpendicular to the segment.

Postpetiole and first segment of gaster equal in length.

Shining; mandibles finely striate with small scattered points.

Fig. 1.



*Rhytidoponera cerastes*, Craw.

A, front view of horns; B, profile; C, dorsum of thorax.

Upper surface of head, including frontal carinæ and clypeus, coarsely reticulate-punctate. The impressions at the bases of the horns are finely reticulate only, the space between them smooth with a few shallow punctures; the back of the horns and the occipital border smooth and shining. Sides of head with large shallow punctures widely disposed, the spaces between finely reticulate. Scapes longitudinally striate.