

than long, scarcely depressed, feebly shining in the middle, more strongly shining at the periphery with a very faint median carinula extending a short way from the median angle. Frontal lobes short, parallel, and acutely pointed in front. Frontal furrow virtually obliterated. Eyes oval, moderately convex, their anterior border situated slightly in front of the middle of the side of the head. Mandibles stout, strongly convex in two planes and bearing seven teeth on the masticatory

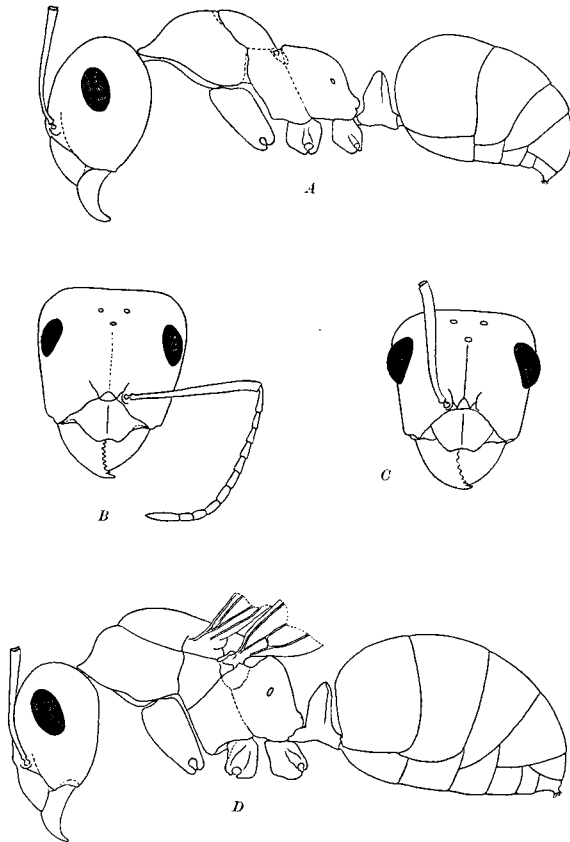


Fig. 1. *Formica wheeleri*, new species.

A. Profile view of worker; B. Head of worker; C. Head of female; D. Profile view of female. All drawings made to same scale.

margin. Antennal scapes rather stout, evenly thickened from base to apex and only slightly curved. In repose the tip of the scape surpasses the occipital margin by a distance equal to twice its thickness. All funicular joints longer than thick, joints 1-4 each increasing in diameter from base to apex, joints 5-10 somewhat thicker than the preceding joints and cylindrical in shape, the terminal joint as long as the two preceding joints together and tapering toward the apex.