

Scale of the petiole seen in profile thick at the base but sharp at the crest, the posterior face straight and perpendicular, the anterior face sharply bent in the middle with upper half sloping back to the crest of the scale. Seen from behind, the scale flares strongly from the base to the upper edge. The latter is moderately convex with a very feeble notch in the middle. The basal half of the anterior face of the scale is very convex in a lateral plane. This convexity decreases in that portion of the

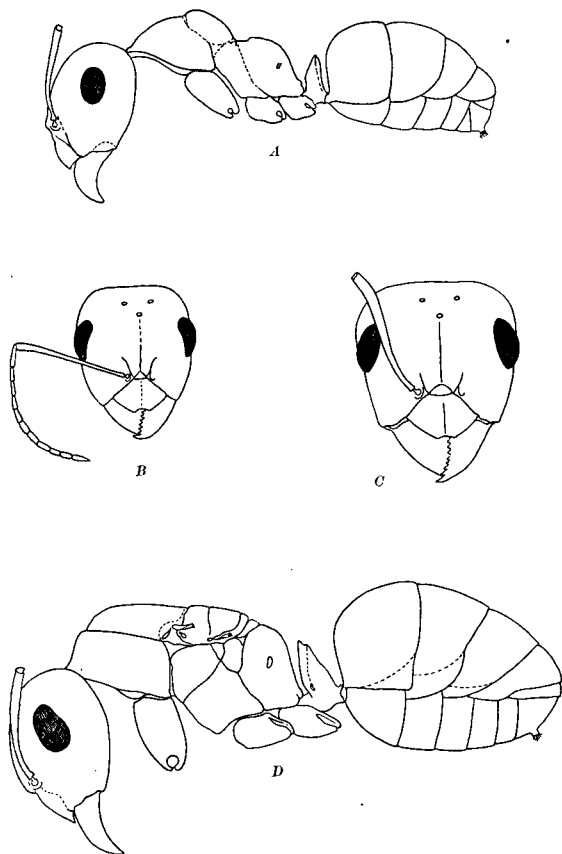


Fig 2. *Formica curiosa*, new species.

A. Profile view of worker; B. Head of worker; C. Head of female; D. Profile view of female. All drawings made to same scale.

anterior face which slopes backwards to the crest of the scale. Abdomen bulky and oval. Legs long and stout with the femora slightly curved.

Thorax finely and densely shagreened, opaque; upper surface of the head and the coxae more feebly shagreened, somewhat shining; under surface of the head, the femora and tibiae very feebly shagreened, rather strongly shining and with sparse piliferous punctures; mandible punctatostriate, feebly shining.