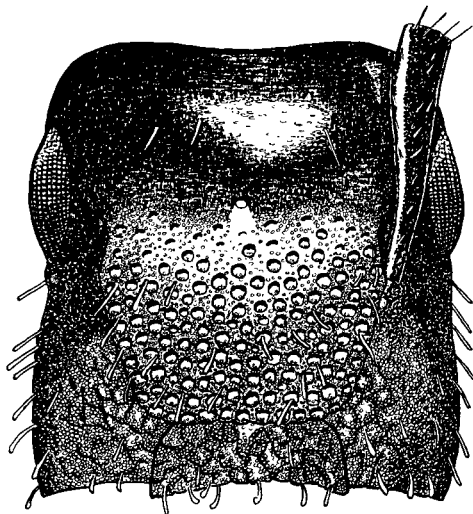


dibles and clypeus, sparser on the front and represented on the occiput by a single pair. Thorax without erect hairs. Crest of the petiole with several very short, delicate erect hairs. Erect hairs on the gaster widely and rather evenly spaced over the dorsum except at the base of the first segment, which is hairless. Fore femora laterally compressed as in the major. Color: blackish brown, the mandibles and tarsal joints light brown.

Female: head 1.25 mm., thorax and petiole 2.3 mm., overall length 6.0 mm. (Plate 13, figure 1)

Head similar to that of the major but with all three ocelli large and prominent. Sculpture on the truncated



Text-figure 1. Upper surface of the head of the major worker of *Camponotus (Colobopsis) papago* sp. nov.

portion of the head identical with that of the major. Reticulate sculpture on the frontal lobes smaller and shallower than that of the major and not extending as far back on the head. Eyes distinctly larger and more convex than those of the major. Hairs on the mandibles and the truncated portion of the clypeus longer and less clubbed than those of the major.