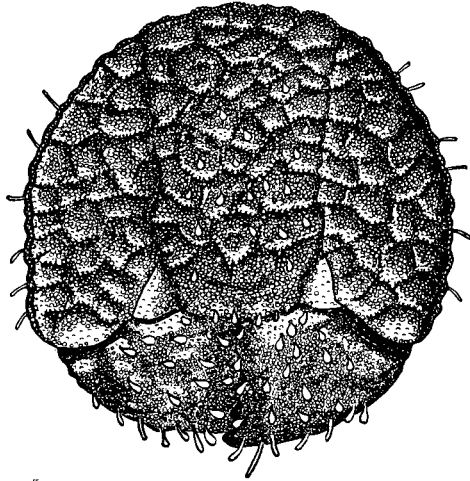


Thorax feebly shagreened and rather strongly shining, with small, scattered, appressed hairs as in the major. Erect hairs absent on the thorax except for a pair of long, yellowish hairs which arise from the scutellum. Gaster more feebly shagreened and more strongly shining than the thorax but with similar appressed hairs. Erect hairs on the gaster only moderately abundant, mostly confined to a row at the rear of each segment. Erect hairs on the terminal gastric segment distinctly longer than those elsewhere. Fore femora laterally compressed as in the major. Color blackish brown, the anterior quarter of the head, much of the scutum and the middle and hind tarsi yellow-



Text-figure 2. Truncated surface of head of major worker of *Camponotus (Colobopsis) papago* sp. nov.

ish brown. Wings hyaline, iridescent and with pale yellowish veins.

Male: Head 0.7 mm., thorax 1.5 mm., overall length 3.5 mm.

The sides of the head in front of the eyes taper slightly from the anterior edge of the eye to the insertion of the mandible. Behind the eyes the sides of the head are evenly